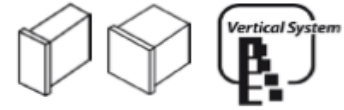


500 / 1000

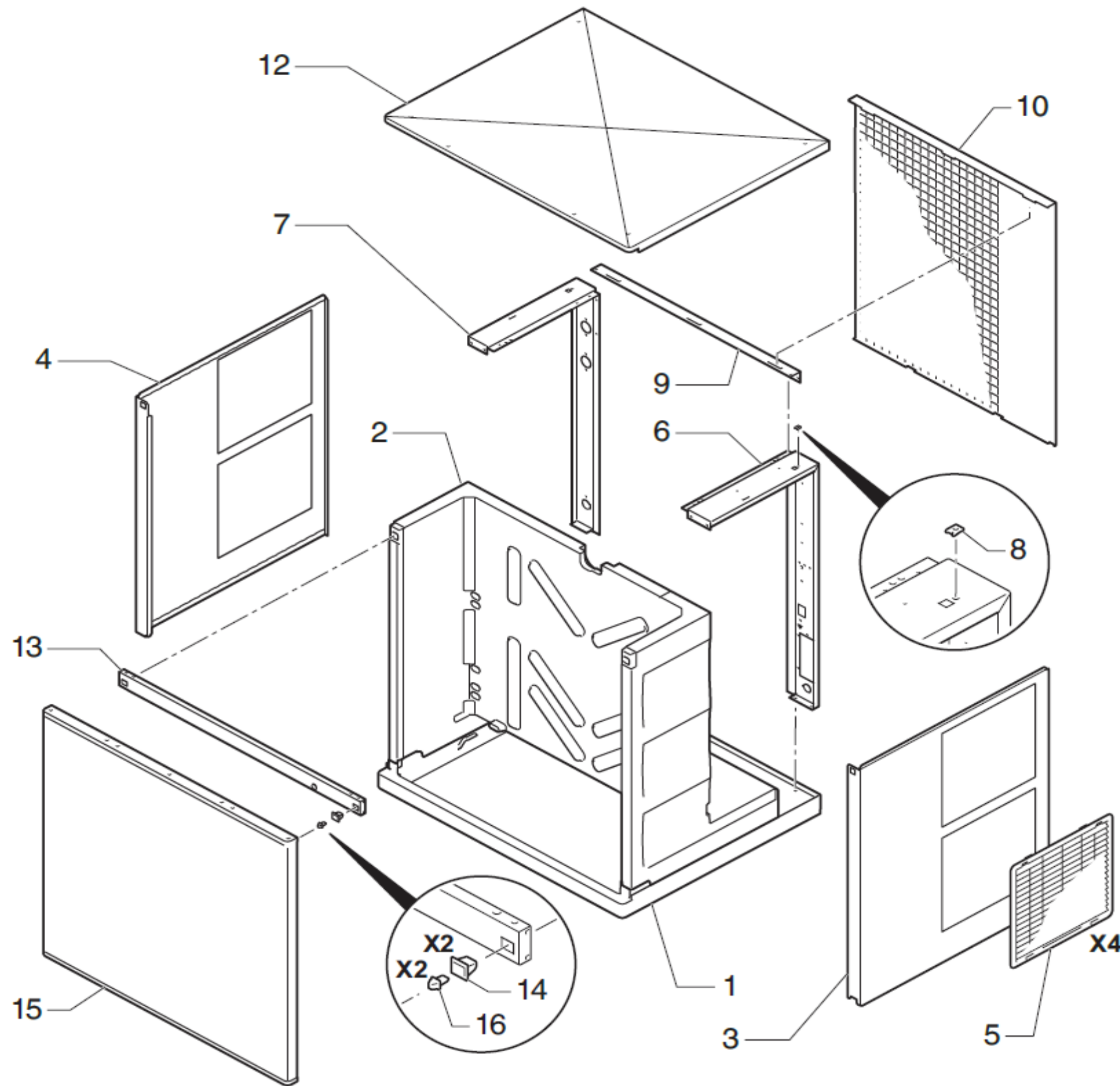


SPIKA MS

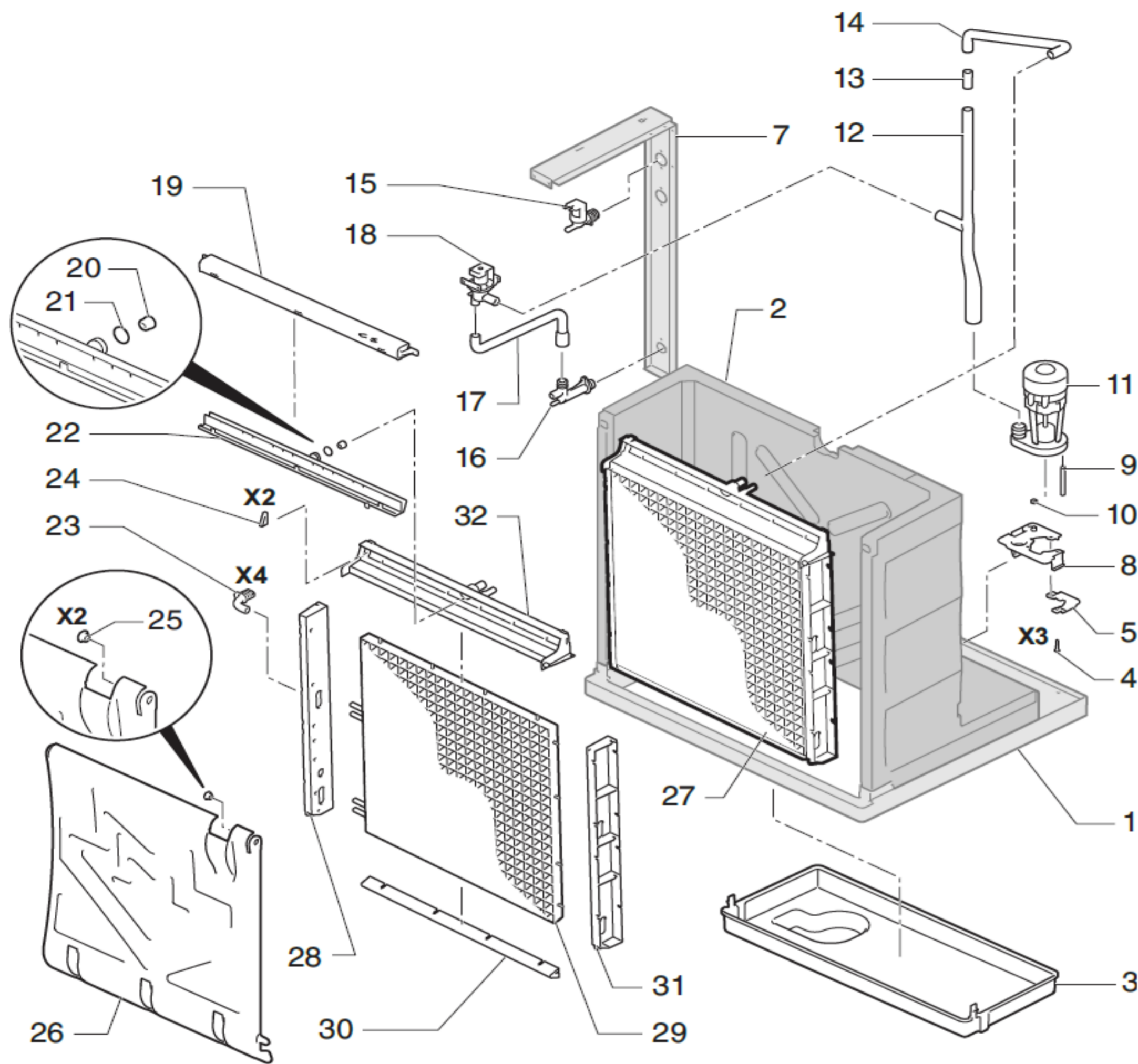
ITV
ICE makers



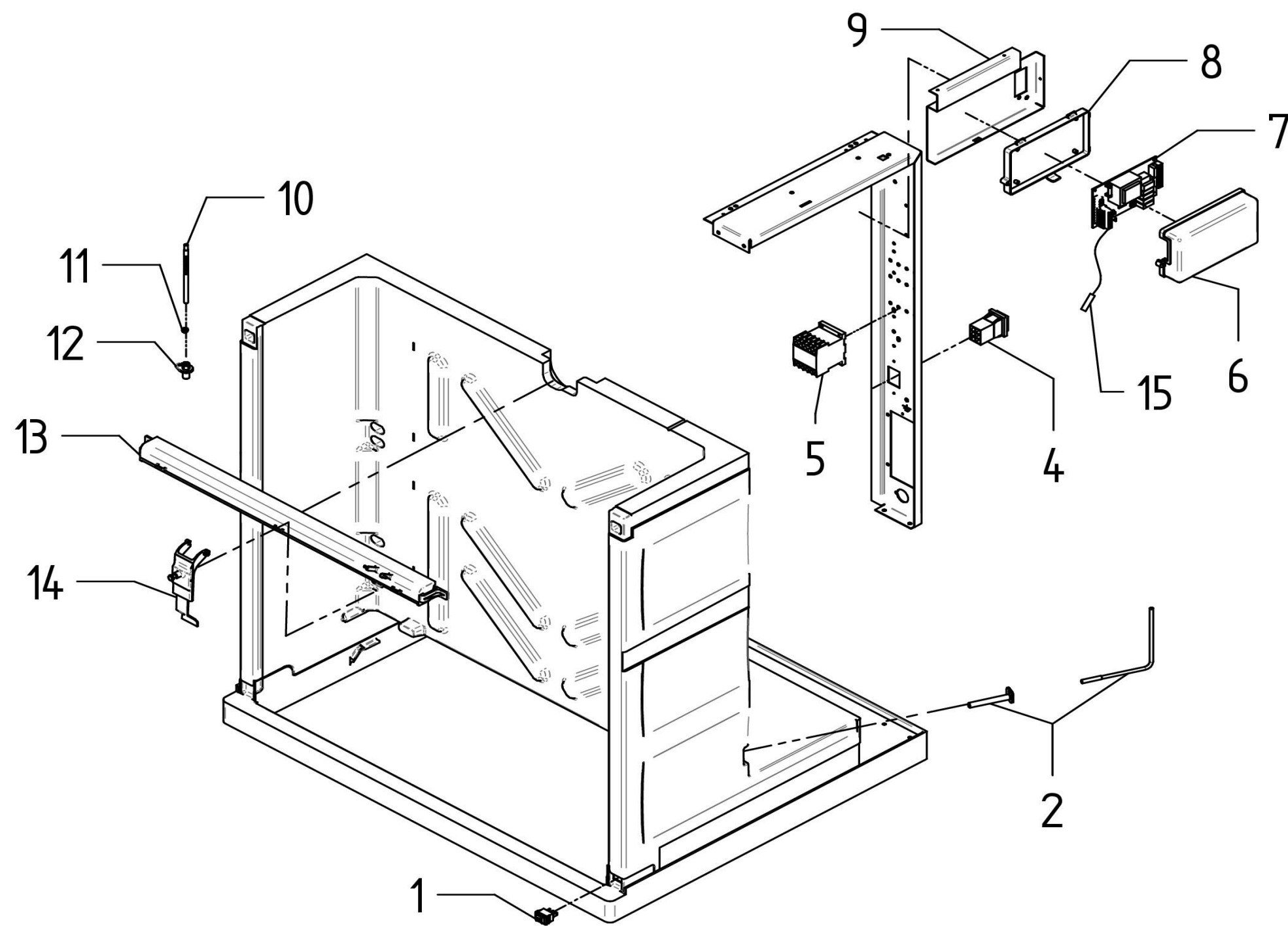
DESPIECE / REPUESTOS
EXPLODED VIEW / SPARE PARTS
EXPLOSIONSZEICHNUNG / ERSATZTEILE
VUE ÉCLATÉE / PIÈCES DÉTACHÉES
ESPLOSO / RICAMBI



	DESCRIPTION	MODEL	
		MS 500	MS 1000
1	BASE PLATE	6074	6074
2	INSULATED BODY	6342	6343
3	RIGHT SIDE PANEL	6327	6329
4	LEFT SIDE PANEL	6328	6330
5	SIDE GUARD	6084	6084
6	RIGHT BRACKET	32312U	6320
7	LEFT BRACKET	32311	32299
8	FAST NUT	311	311
9	UPPER REAR BRACKET	6321	6321
10	REAR PANEL	6315	6316
12	TOP PANEL	6073	6073
13	FRONT BRACKET	6331	6331
14	FEMALE PANEL CLIP	6180	6180
15	FRONT PANEL	6269	6270
16	MALE PANEL CLIP	6181	6181



DESCRIPTION	MODEL	
	MS 500	MS 1000
1 BASE PLATE	6074	6074
2 INSUALTED BODY	6342	6343
3 WATER TRAY	6078	6078
4 INOX SCREW M5x20	7931	7931
5 PUMP BRACKET TERMINATION	6106	6106
7 LEFT FRAME	32311	32299
8 PUMP BRACKET	6079	6079
9 PUMP EARTHING CABLE	6454	6454
10 COMPRESSING RING	504	504
11 WATER PUMP	115V/60hz 220V/50-60HZ	6508 -
12 BOTTOM WATER PUMP TUBE	6130	6130
13 CONNECTION TUBE	6526	6526
14 TOP WATER PUMP TUBE	6129	6129
INLET WATER VALVE 220V/50-60HZ UL (*needed serial number)	-	8963*
15 INLET WATER VALVE 115V/50-60HZ UL (*needed serial number)	7687* 31810*	- 31811*
16 DRAIN MANIFOLD (*needed serial number)	6206* 31723*	6206* 31723*
17 DRAIN TUBE (*needed serial number)	6131* 31845*	6131* 31845*
18 WATER DRAIN VALVE	6182	6183
19 DISTRIBUTOR COVER	30039	30039
20 GREY DISTRIBUTOR COVER	30039G	30039G
21 FLOW REDUCER 7MM	6414	6414
22 FLOW REDUCER 9MM	6485	6485
23 O-RING	4496	4496
24 DISTRIBUTOR	30039	30039
25 GREY DISTRIBUTOR	30039G	300039G
26 TUBE PROTECTION	6132	6132
27 DISTRIBUTOR GASKET	6456	6456
28 CURTAIN BUSHING	1001	1001
29 CURTAIN	6081K	6080K
30 COMPLETE EVAPORATOR DICE 1"	6337	6339
31 COMPLETE EVAPORATOR DICEO 1/2"	6338	6340
32 EVAPORATOR LEFT PANEL	2982	2978
NICKEL-PLATED EVAPORATOR DICE 1"	5747	5753
NICKEL-PLATED EVAPORATOR DICE 1/2"	5744	5750
EVAPORATOR BOTTOM PANEL	6086	6086
EVAPORATOR RIGHT PANEL	2981	2977
EVAPORATOR TOP PANEL	6085	6085



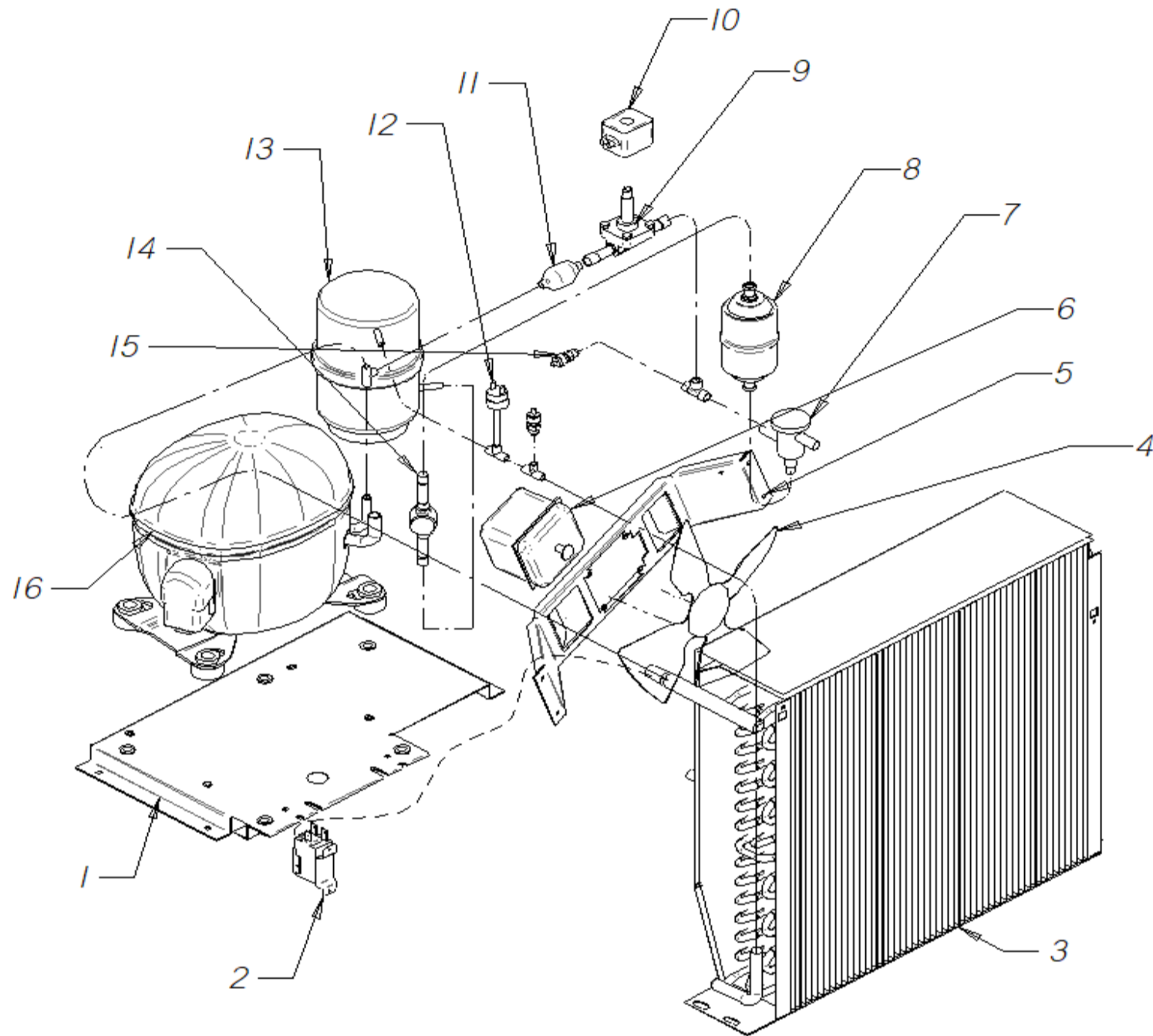
DESCRIPTION	MODEL	
	MS 500	MS 1000
1 SWITCH (ICE-OFF-WASH)	6161	6161
2 CURTAIN SENSOR	6521A	6521A
4 MAIN POWER SWITCH	2287	2287
5 CONTACTOR 240V	-	30027A
CONTACTOR 110V	30026	-
6 ELECTRIC BOX COVER	30861	30861
ELECTRONIC BOARD 220V/50-60HZ	-	6252D
7 ELECTRONIC BOARD 115V/50-60HZ	6253C	-
ELECTRONIC BOARD BEFORE S/N 17736480	30923	30922
8 ELECTRIC BOX	2181	2181
9 ELECTRIC BOX BRACKET	6138	6138
10 WATER LEVEL PROBE	30982	30982
11 COMPRESSION RING	504	504
12 LEVEL PROBE BRACKET	8670	8670
13 DISTRIBUTOR COVER	30039	30039
14 THICKNESS ICE PROBE	6334A	6334A
15 TEMPERATURE PROBE FOR COMPRESSOR SUCTION	-	3004

AIR CONDENSER

500 / 1000



SPIKA MS



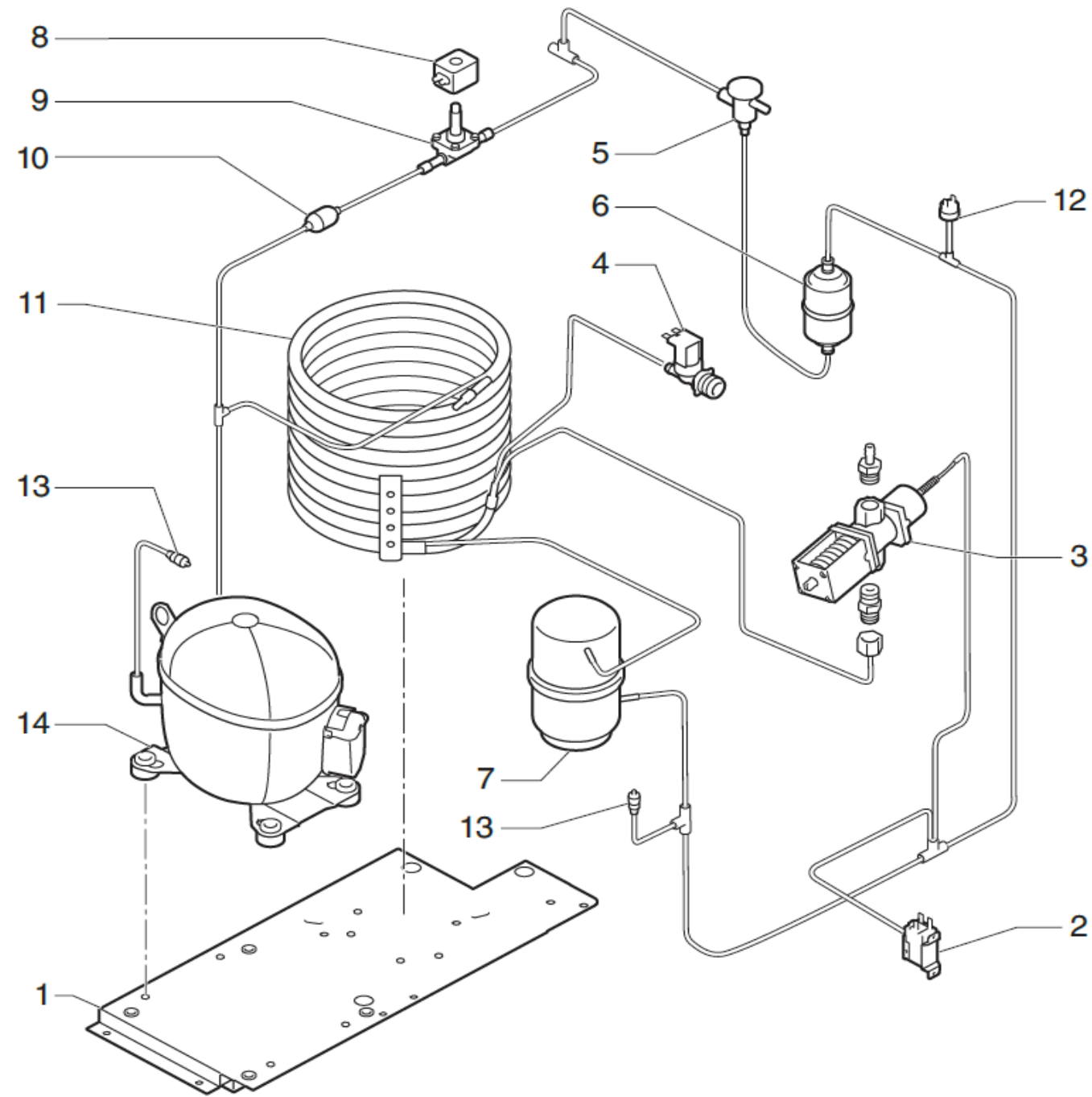
	DESCRIPTION	MODEL	
		MS 500	MS 1000
1	BASE PLATE	6326	6326
2	CONDENSATION PRESSURE SWITCH	2507	2507
3	AIR CONDENSER	6156	6157
4	FAN BLADE	4888	6398
5	FAN BLADE SUPPORT	6500	6501
6	FAN MOTOR 115V/60HZ	6397	-
	FAN MOTOR 203-230V/60HZ	-	4894
7	EXPANSION VALVE	1035	1035
8	DRIER FILTER	2560	2560
9	HOT GAS VALVE	6396	843
10	COIL 220V/50-60HZ	-	5173
	COIL 115V/60HZ	5414	-
12	HIGH PRESSURE SWITCH	334	334
13	PRESSURE TANK (UNLISTED MODELS)	6241	6241
14	SIGHT (UNLISTED MODELS)	336	336
15	LOAD VALVE	335	335
16	COMPRESSOR		
	115V/60HZ	6394	-
	220V/60HZ/3PH	-	8304
	COMPRESSOR ELECTRIC KIT	-	8304EK

WATER CONDENSER

500 / 1000



SPIKA MS



	DESCRIPTION	MODEL		
		MS 500	MS 1000	
1	PLATE BASE	6326	6326	
2	CONDENSATION PRESSURE SWITCH	2507	-	
3	PRESSURE SWITCH VALVE	-	425	
4	WATER VALVE 115V/60HZ	7687	8963	
5	EXPANSION VALVE	1035	1035	
6	DRIER FILTER	2560	2560	
7	PRESSURE TANK	6241	6241	
8	HOT GAS VALVE	6396	843	
9	COIL 220V/50-60HZ	-	5173	
	COIL 115V/60HZ	5414	-	
11	WATER CONDENSER	5019	3268	
12	HIGH PRESSURE SWITCH	334	334	
13	LOAD VALVE	335	335	
14	COMPRESSOR			
		115V/60HZ	6394	-
		220V/60HZ/3PH	-	8304
	COMPRESSOR ELECTRIC KIT	-	8304EK	