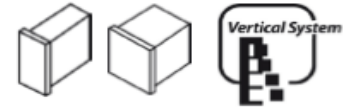


440 / 500 / 880 / 1000



SPIKA MS

ITV |
ICE makers



DESPIECE / REPUESTOS
EXPLODED VIEW / SPARE PARTS
EXPLOSIONSZEICHNUNG / ERSATZTEILE
VUE ÉCLATÉE / PIÈCES DÉTACHÉES
ESPLOSO / RICAMBI

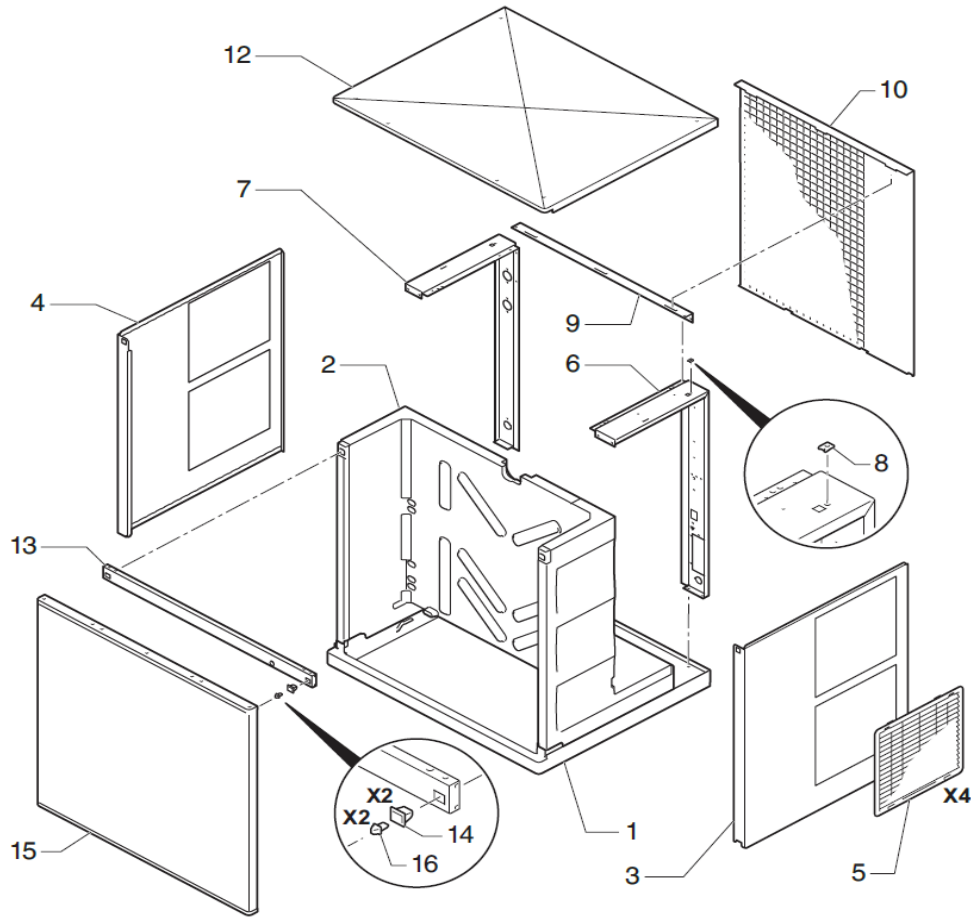
ITV | **ICE** makers **SERVICE** 

CABINET

440 / 500 / 880 / 1000



SPIKA MS



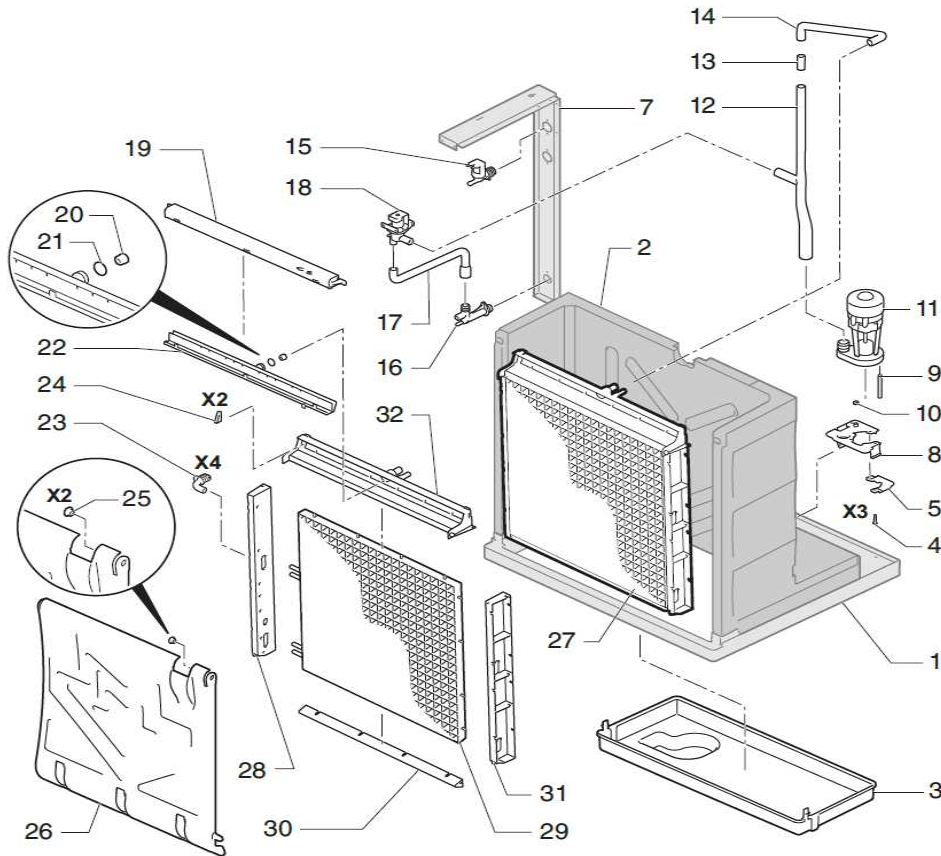
	DESCRIPTION	MODEL			
		MS 440	MS 500	MS 880	MS 1000
1	BASE PLAT	6074	6074	6074	6074
2	INSULATED BODY	6342	6342	6343	6343
3	RIGHT SIDE PANEL	6327	6327	6329	6329
4	LEFT SIDE PANEL	6328	6328	6330	6330
5	SIDE GUARD	6084	6084	6084	6084
	RIGHT BRACKET before s/n 18346800	6319	6319	6320	6320
6	RIGHT BRACKET	32312	32312		
	LEFT BRACKET before s/n 18346800	6325	6325	6324	6324
7	LEFT BRACKET	32311	32311		
	LEFT BRACKET WATER CONDENSED before s/n 18346800	32324	32324		
	WATER CONDENSED	32354	32354		
8	FAST NUT	311	311	311	311
9	UPPER REAR BRACKET	6321	6321	6321	6321
10	REAR PANEL	6315	6315	6316	6316
12	TOP PANEL	6073	6073	6073	6073
13	FRONT BRACKET	6331	6331	6331	6331
14	FEMALE PANEL CLIP	6180	6180	6180	6180
15	FRONT PANEL	6269	6269	6270	6270
16	MALE PANEL CLIP	6181	6181	6181	6181

MANUFACTURING CONTAINER

440 / 500 / 880 / 1000



SPIKA MS



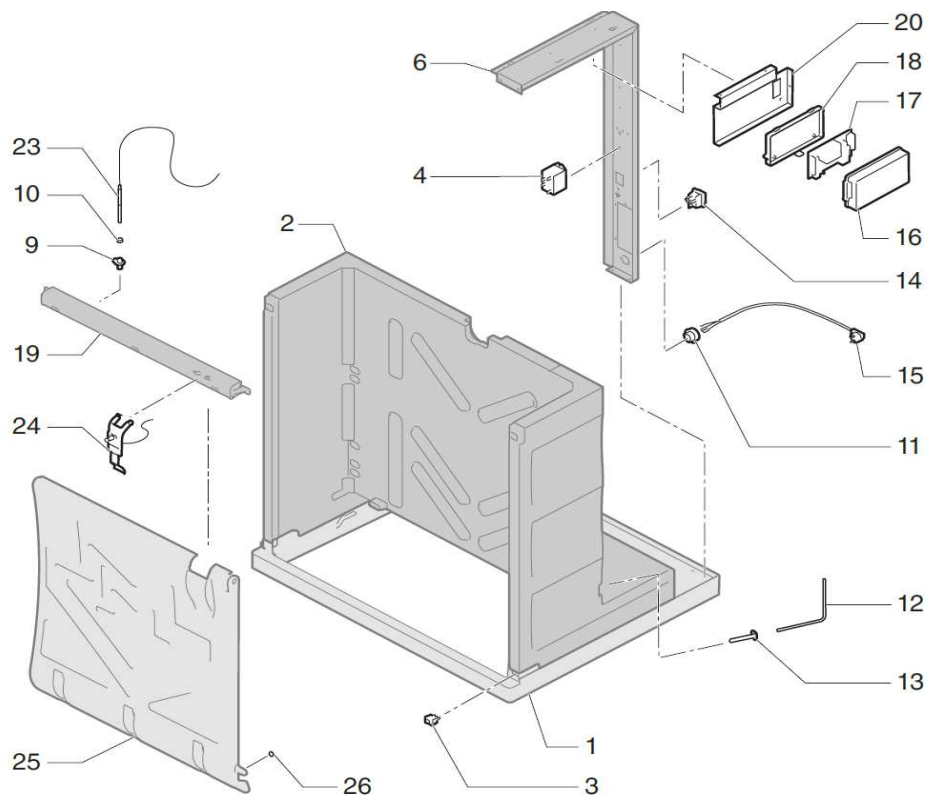
	DESCRIPTION	MODEL			
		MS 440	MS 500	MS 880	MS 1000
1	BASE PLATE	6074	6074	6074	6074
2	INSUALTED BODY	6342	6342	6343	6343
3	WATER BIN	6078	6078	6078	6078
4	INOX SCREW M5x20	7931	7931	7931	7931
5	PUMP BRACKET TERMINATION	6106	6106	6106	6106
7	LEFT BRIDGE	6325	6325	6324	6324
8	PUMP BRACKET	6079	6079	6079	6079
9	PUMP EARTHING CABLE	6454	6454	6454	6454
10	COMPRESSING RING	504	504	504	504
11	WATER PUMP	115V/60hz 6508 220V/50-60HZ -	6508 -	6508 6509	- 6509
12	BOTTOM TUBE	6130	6130	6130	6130
13	CONNECTION TUBE	6526	6526	6526	6526
14	TOP TUBE	6129	6129	6129	6129
15	WATER VALVE 220V/50-60HZ UL before s/n 18346800	-	-	8963	8963
	WATER VALVE 115V/50-60HZ UL before s/n 18346800	7687	7687	-	-
	WATER VALVE 115V/50-60HZ UL	31810	31810	-	-
	WATER VALVE 220V/50-60HZ UL	-	-	31811	31811
16	DRAIN COLLECTOR before s/n 18346800	6206	6206	6206	6206
	DRAIN COLLECTOR	31723	31723	31723	31723
17	DRAIN TUBE before s/n 18346800	6131	6131	6131	6131
	DRAIN TUBE	31845	31845	31845	31845
18	WATER DRAIN VALVE 220V/50-60HZ	6182	6182	6183	6183
19	DISTRIBUTOR COVER	30039	30039	30039	30039
	GREY DISTRIBUTOR COVER	30039G	30039G	30039G	30039G
20	FLOW REDUCER 7MM	6414	6414	6414	6414
	FLOW REDUCER 9MM	6485	6485	6485	6485
21	O-RING	4496	4496	4496	4496
22	DISTRIBUTOR	30039	30039	30039	30039
	GREY DISTRIBUTOR	30039G	30039G	30039G	30039G
23	TUBE PROTECTION	6132	6132	6132	6132
24	DISTRIBUTOR GASKET	6456	6456	6456	6456
25	BEARING	1001	1001	1001	1001
26	CURTAIN	6081	6081	6080	6080
27	COMPLETE EVAPORATOR DICE 1"	6337	6337	6339	6339
	COMPLETE EVAPORATOR DICEO 1/2"	6338	6338	6340	6340
28	EVAPORATOR LEFT PANEL	2982	2982	2978	2978
	NICKEL-PLATED EVAPORATOR DICE 1"	5747	5747	5753	5753
	NICKEL-PLATED EVAPORATOR DICE 1/2"	5744	5744	5750	5750
30	EVAPORATOR BOTTOM PANEL	6086	6086	6086	6086
31	EVAPORATOR RIGHT PANEL	2981	2981	2977	2977
32	EVAPORATOR TOP PANEL	6085	6085	6085	6085

ELECTRIC BOX

440 / 500 / 880 / 1000



SPIKA MS



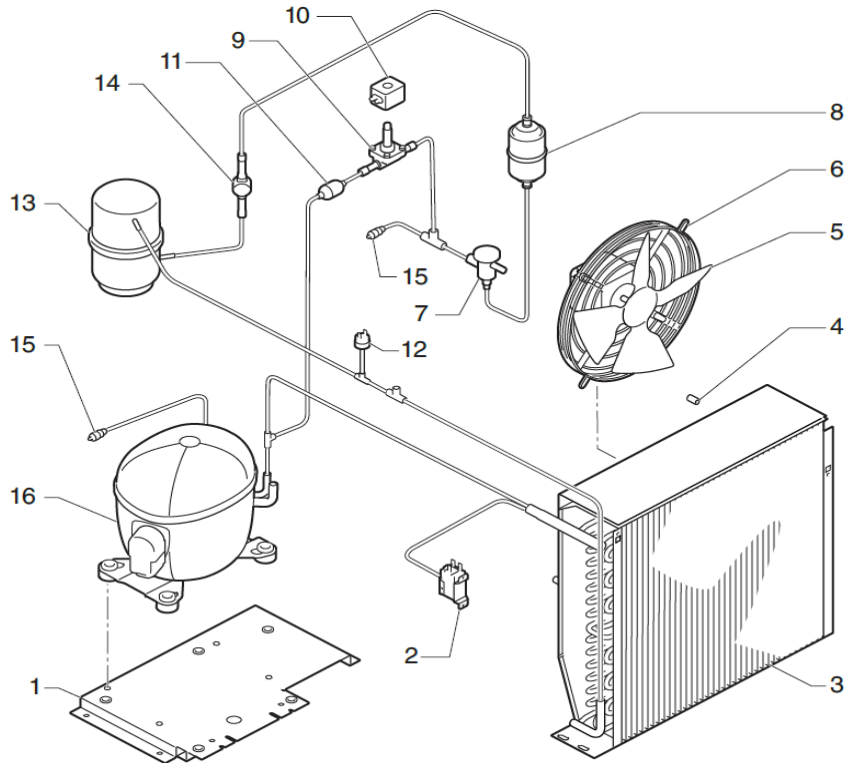
DESCRIPTION	MODEL			
	MS 440	MS 500	MS 880	MS 1000
1 BASE PLATE	6074	6074	6074	6074
2 INSULATED BODY	6342	6342	6343	6343
3 SWITCH (ICE-OFF-WASH)	6161	6161	6161	6161
6 RIGHT BRIDGE	6319	6319	6320	6320
9 LEVEL PROBE BRACKET	8670	8670	8670	8670
10 COMPRESSING RING	504	504	504	504
11 CABLE RESTRAINT	4907	-	4907	4907
12 CURTAIN PROBE	6521	6521	6521	6521
13 CURTAIN PROBE BLOCK	8671	8671	8671	8671
14 ON/OFF SIWTCH	2287	2287	2287	2287
15 ELECTRIC SUPPLY WIRE 220V/60HZ	2771	-	3675	3675
16 ELECTRIC BOX COVER	30861	30861	30861	30861
ELECTRONIC BOARD 220V/50-60HZ	-	-	6252B	6252B
17 ELECTRONIC BOARD 115V/50-60HZ	6253B	6253B	-	-
ELECTRONIC BOARD BEFORE S/N 17736480	30923	30923	30922	30922
18 ELECTRIC BOX	2181	2181	2181	2181
19 DISTRIBUTOR COVER	30039	30039	30039	30039
20 ELECTRIC BOX BRACKET	6138	6138	6138	6138
23 WATER LEVEL PROBE	30982	30982	30982	30982
24 THICKNESS ICE PROBE	6334	6334	6334	6334
25 CURTAIN	6081	6081	6080	6080
26 MAGNET	6179	6179	6179	6179

AIR CONDENSER

440 / 500 / 880 / 1000



SPIKA MS



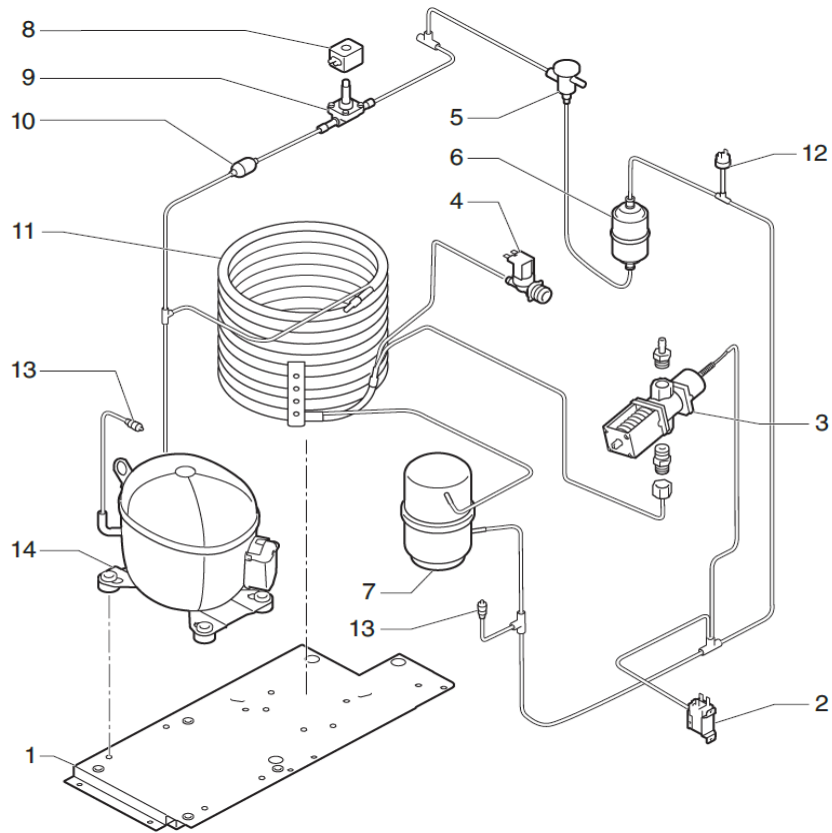
	DESCRIPTION	MODEL			
		MS 440	MS 500	MS 880	MS 1000
1	BASE PLATE	6326	6326	6326	6326
2	CONDENSATION PRESSURE SWITCH	2507	2507	2507	2507
3	AIR CONDENSER	6156	6156	6157	6157
4	FAN SUPPORT	6500	6500	6501	6501
5	FAN 115V/60HZ	6397	6397	-	-
	FAN B 203-230V/3ph/60HZ	-	-	4894	4894+
6	DRIER FILTER	2560	2560	2560	2560
	BLADE	4888	4888	6398	6398
7	EXPANSION VALVE	1035	1035	1035	1035
8	DRIER FILTER	2560	2560	2560	2560
9	HOT GAS VALVE	6396	6396	843	843
10	COIL 220V/50-60HZ	-	-	5173	5173
	COIL 115V/60HZ	5414	5414	-	-
12	HIGH PRESSURE SWITCH	334	334	334	334
13	PRESSURE TANK (UNLISTED MODELS)	6241	6241	6241	6241
14	SIGHT (UNLISTED MODELS)	336	336	336	336
15	LOAD VALVE	335	335	335	335
16	COMPRESSOR				
	115V/60HZ	6394	6394	-	-
	220V/60HZ/3PH	-	-	8304	8304

WATER CONDENSER

440 / 500 / 880 / 1000



SPIKA MS



	DESCRIPTION	MODEL			
		MS 440	MS 500	MS 880	MS 1000
1	PLATE BASE	6326	6326	6326	6326
2	CONDENSATION PRESSURE SWITCH	2507	2507	-	-
3	PRESSURE SWITCH VALVE	-	-	425	425
4	WATER VALVE 115V/60HZ	7687	7687	-	-
5	EXPANSION VALVE	1035	1035	1035	1035
6	DRIER FILTER	2560	2560	2560	2560
7	PRESSURE TANK	6241	6241	6241	6241
8	HOT GAS VALVE	6396	6396	843	843
9	COIL 220V/50-60HZ	-	-	5173	5173
	COIL115V/60HZ	5414	5414	-	-
11	WATER CONDENSER	5246	5246	3268	3268
12	HIGH PRESSURE SWITCH	334	334	334	334
13	LOAD VALVE	335	335	335	335
	COMPRESSOR				
14	115V/60HZ	6394	6394	-	-
	220V/60HZ/3PH	-	-	8304	8304