



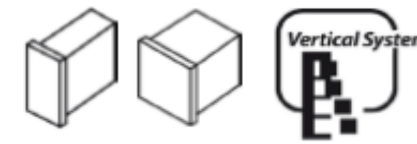
SPIKA MS 400-700 R404A

ITV
ICE makers

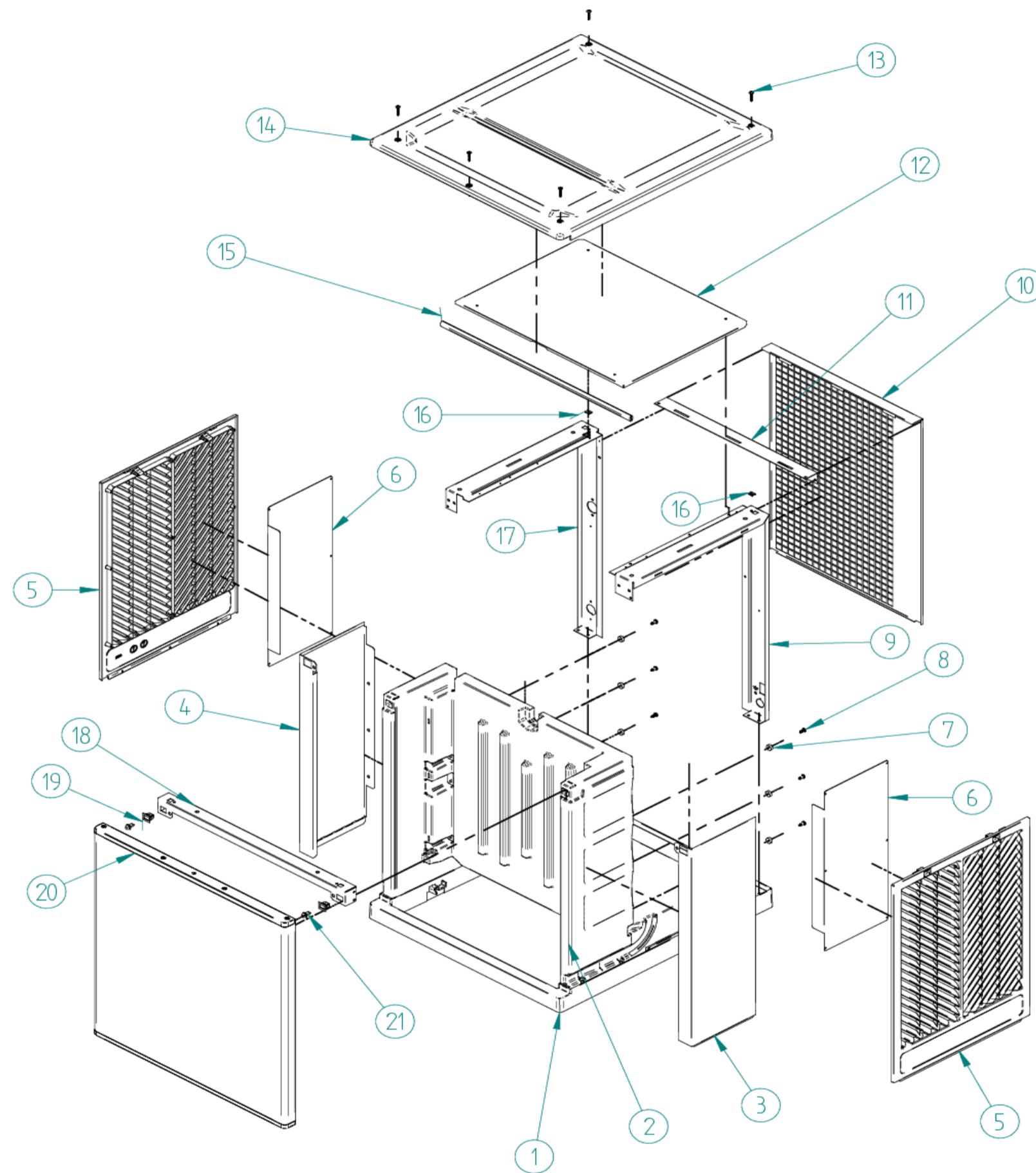


DESPIECE / REPUESTOS
EXPLODED VIEW / SPARE PARTS
EXPLOSIONSZEICHNUNG / ERSATZTEILE
VUE ÉCLATÉÉ / PIÈCES DÉTACHÉES
ESPLOSO / RICAMBI

CABINET



SPIKA MS 400-700 R404A

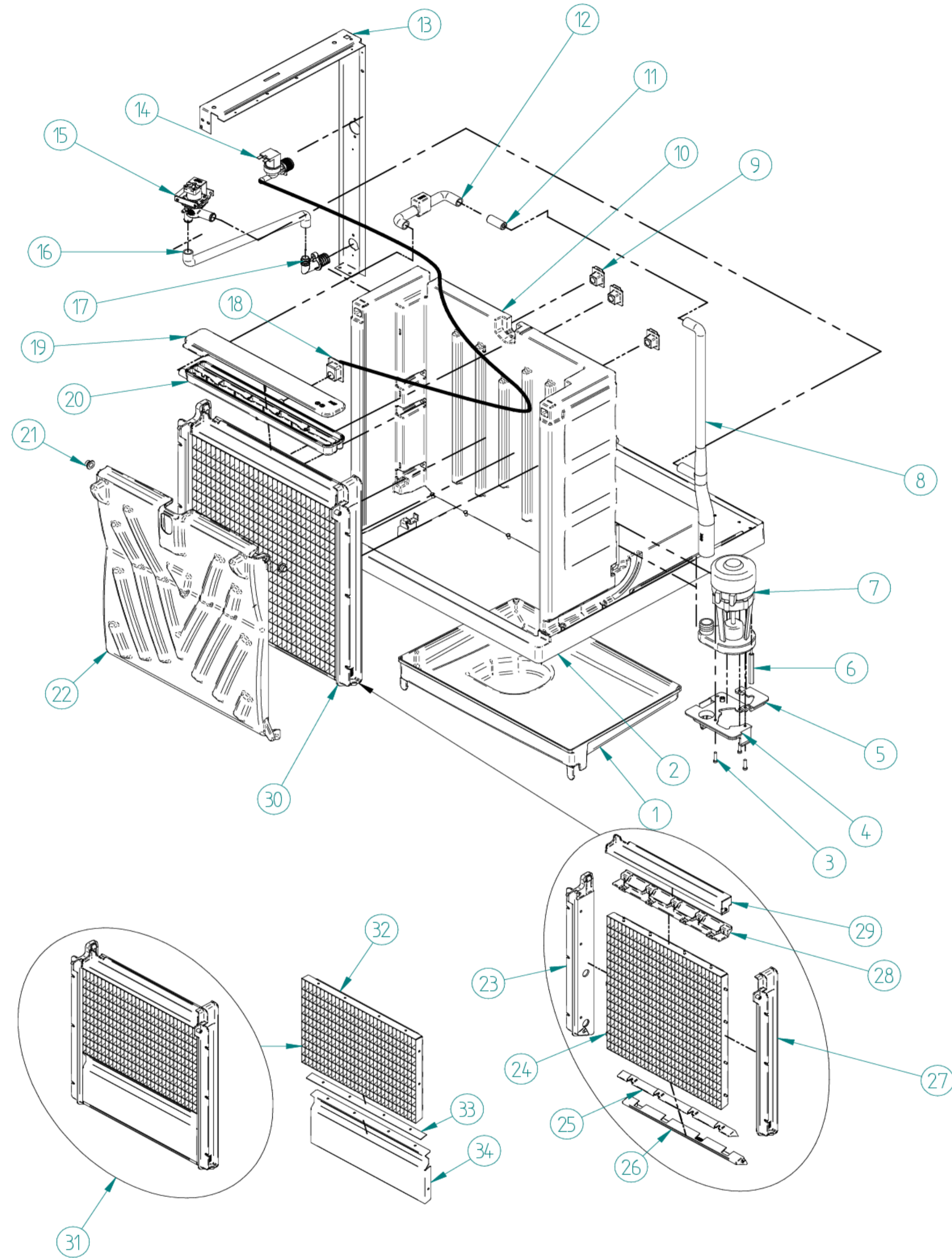


| DESCRIPTION | | MODEL |
|-------------|--------------------------|------------|
| | | MS 400-700 |
| 1 | BASE PLATE | 30412 |
| 2 | INSULATED BODY | 30428 |
| 3 | RIGHT SIDE PANEL | 30747 |
| 4 | LEFT SIDE PANEL | 30748 |
| 5 | SIDE GRILLE | 30424 |
| 6 | SIDE GRILLE COVER | 30908 |
| 7 | LEGS | 2171 |
| 8 | SCREW 4.8X13 | 275 |
| 9 | RIGHT SUPPORT | 30742 |
| 10 | REAR PANEL | 30746 |
| 11 | REAR BRACE | 30743 |
| 12 | METALLIC FIREWALL SHIELD | 30909 |
| 13 | BLACK SCREW 3.9X25 | 30910 |
| 14 | TOP PANEL | 30423 |
| 15 | COVER PIECE | 30753 |
| 16 | NUT | 311 |
| 17 | LEFT SUPPORT | 30744 |
| 18 | FRONT BRACE | 30745 |
| 19 | FEMALE PANEL CLIP | 6180 |
| 20 | FRONT DOOR | 30749 |
| 21 | MALE PANEL CLIP | 6181 |

MANUFACTURING CONTAINER



SPIKA MS 400-700 R404A

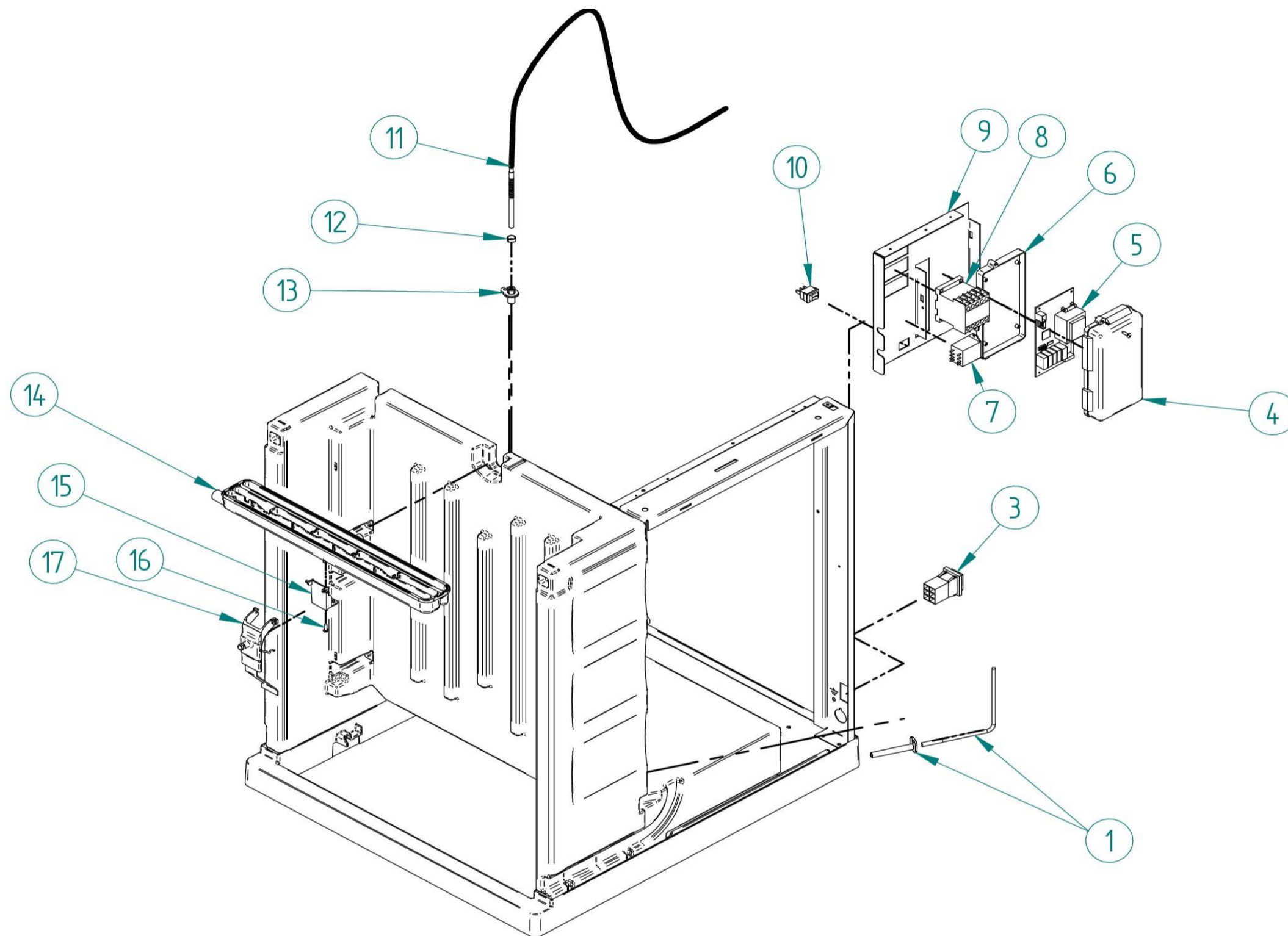


| DESCRIPTION | MODEL | |
|--------------------------------------------------------|--------|---------|
| | MS 400 | MS 700 |
| 1 WATER TRAY | | 30413 |
| 2 BASE FRAME | | 30412 |
| 3 SCREW 5X20 | | 7931 |
| 4 PUMP SUPPORT | | 6079 |
| 5 PUMP SUPPORT TERMINATION | | 6106 |
| 6 PUMP EARTHING WIRE | | 6454 |
| 7 PUMP 115V/60HZ | | 6508 |
| 7 PUMP 230V/60HZ | - | 6509 |
| 8 BOTTOM TUBE | | 30469 |
| 9 CAP | | 30683 |
| 10 BODY | | 30428 |
| 11 FLOW REDUCER 7mm | | 30784 |
| 12 TOP TUBE | | 30684 |
| 13 LEFT SUPPORT | | 30744 |
| 14 INLET WATER VALVE 115V/60HZ (*needed serial number) | | 7687* |
| 14 INLET WATER VALVE 230V/60HZ | - | 31810* |
| 15 DRAIN VALVE 115V/60HZ | | 6182 |
| 15 DRAIN VALVE 230V/60HZ | - | 6183 |
| 16 DRAIN TUBE (*needed serial number) | | 30468A* |
| | | 31846* |
| 17 DRAIN TUBE CONNECTOR (*needed serial number) | | 30850* |
| | | 31723* |
| 18 DISTRIBUTOR CAP | | 30682 |
| 19 WATER DISTRIBUTOR COVER | | 30427 |
| 20 WATER DISTRIBUTOR | | 30422 |
| 21 CURTAIN BUSHING | | 1001 |
| 22 CURTAIN | | 30420K |
| 23 EVAPORATOR LEFT PANEL | | 30419 |
| 24 EVAPORATOR 1/2" | - | 30778A |
| 24 EVAPORATOR 1" | - | 30906A |
| 25 EVAPORATOR BOTTOM PANEL CLIP | | 30415 |
| 26 EVAPORATOR BOTTOM PANEL | | 30414 |
| 27 EVAPORATOR RIGHT PANEL | | 30418 |
| 28 EVAPORATOR TOP PANEL CLIP | | 30417 |
| 29 EVAPORATOR TOP PANEL | | 30416 |
| 30 COMPLETE EVAPORATOR 1/2" | - | 30752 |
| 30 COMPLETE EVAPORATOR 1" | - | 30907 |
| 31 COMPLETE EVAPORATOR 1/2" | 31933A | - |
| 31 COMPLETE EVAPORATOR 1" | 31947A | - |
| 32 EVAPORATOR 1/2" | 31931 | - |
| 32 EVAPORATOR 1" | 31945 | - |
| 33 THERMAL BRIDGE | 31955 | - |
| 34 EVAPORATOR COVER | 31953 | - |

ELECTRIC BOX



SPIKA MS 400-700 R404A

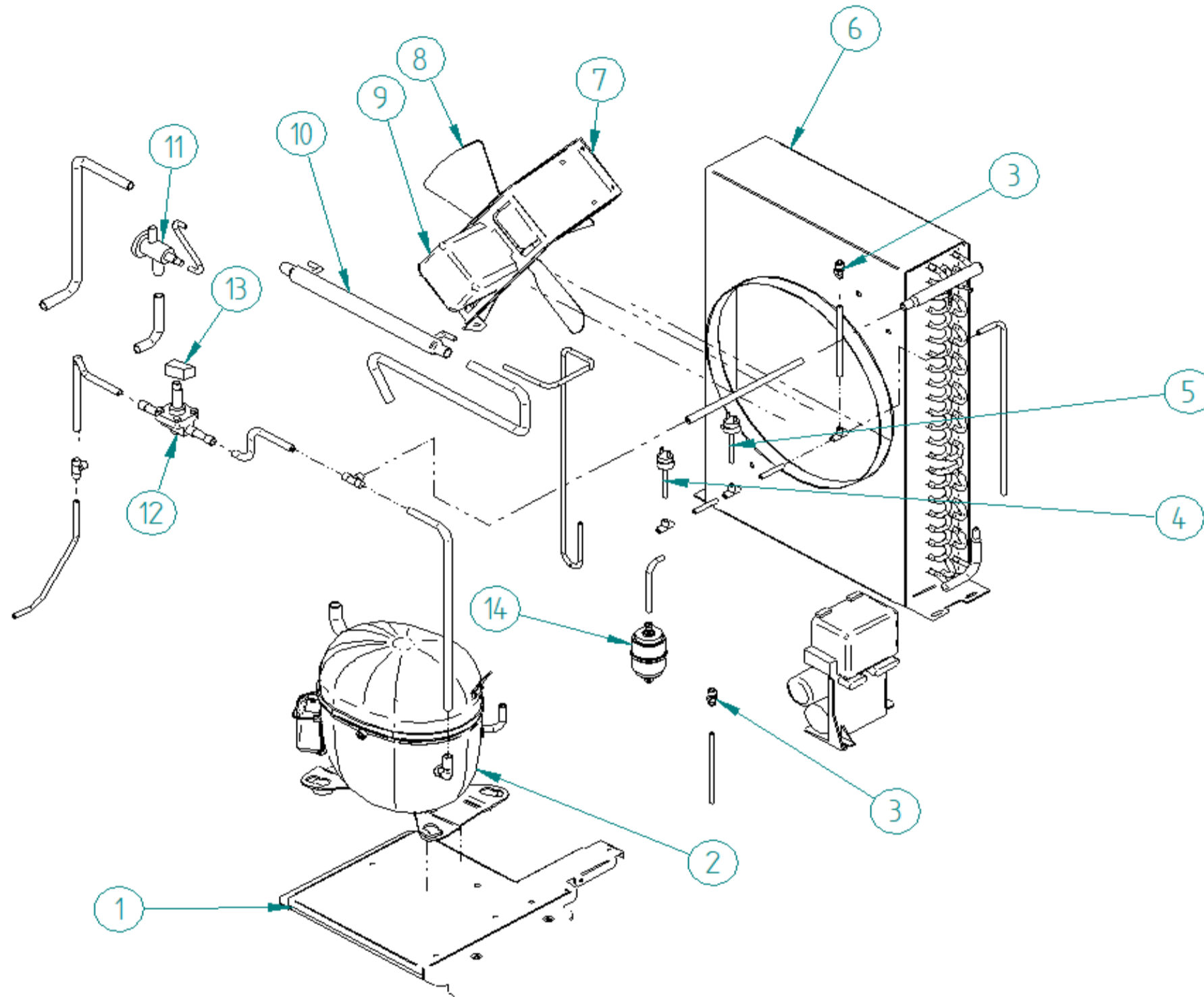


| DESCRIPTION | MODEL | |
|-------------------------------------|--------|--------|
| | MS 400 | MS 700 |
| 1 CURTAIN SENSOR | | 6521A |
| 3 MAIN POWER SWITCH | | 31496 |
| 4 ELECTRIC BOX COVER | | 30861 |
| 5 ELECTRONIC BOARD 115V/60HZ | | 6253C |
| ELECTRONIC BOARD 230V/60HZ | - | 6252C |
| 6 ELECTRONIC BOX | | 2181 |
| 7 RELAY 115V/60HZ | | 2987 |
| RELAY 230V/60HZ | - | 1483 |
| 8 CONTACTOR 115V/60HZ | | 30026 |
| CONTACTOR 230V/60HZ | - | 30027A |
| 9 BOX SUPPORT | | 30741 |
| 10 3 POSITION SWITCH (ICE/OFF/WASH) | | 6161 |
| 11 WATER LEVEL PROBE | | 30982 |
| 12 WASHER | | 504 |
| 13 WATER LEVEL SUPPORT | | 8670 |
| 14 WATER DISTRIBUTOR | | 30422 |
| 15 THICKNESS SENSOR SUPPORT | | 30421 |
| 16 SCREW 3.X12.7 | | 243 |
| 17 THICKNESS SENSOR | | 30894A |

AIR CONDENSER



SPIKA MS 400-700 R404A

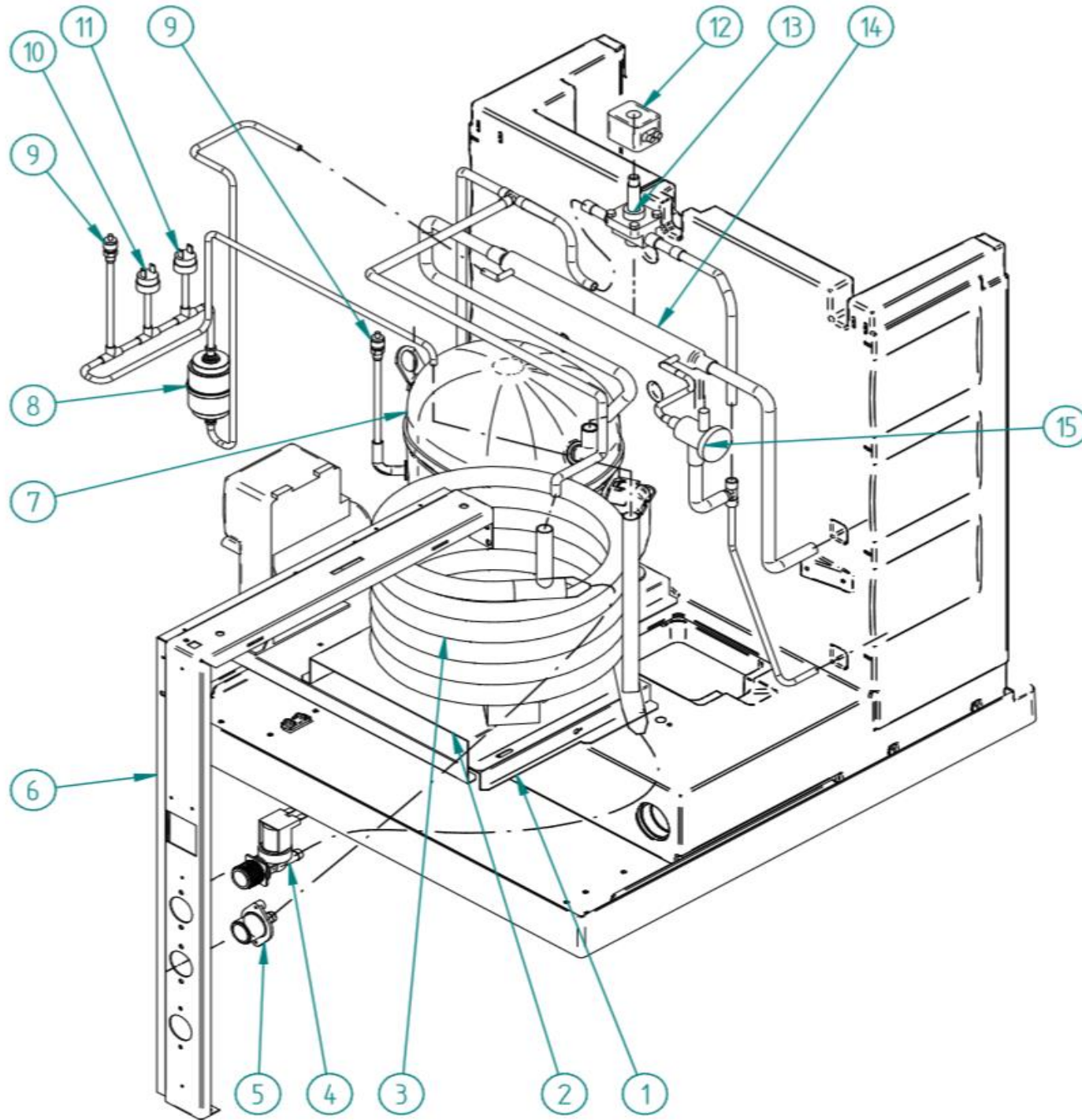


| | DESCRIPTION | MODEL | |
|----|-----------------------------------|----------------|---------|
| | | MS 400 | MS 700 |
| 1 | BASE PLATE | | 30868 |
| 2 | COMPRESSOR 115V/60HZ | | 30662 |
| | COMPRESSOR 115V/60HZ ELECTRIC KIT | | 30662EK |
| | COMPRESSOR 230V/60HZ ELECTRIC KIT | - | 30430EK |
| 2 | COMPRESSOR 230V/60HZ | - | 30430 |
| | 3 | CHARGING VALVE | 335 |
| 4 | HIGH PRESSURE SWITCH | 334 | |
| 5 | FAN CYCLE SWITCH | 7476E | |
| 6 | CONDENSER | 30429 | |
| 7 | FAN SUPPORT | 6501 | |
| 8 | FAN BLADE | 6398 | |
| 9 | FAN MOTOR 115V/60HZ | | 8096 |
| | FAN MOTOR 230V/60HZ | - | 4894 |
| 10 | HEAT EXCHANGER | 8575 | |
| 11 | EXPANSION VALVE Ø6 | 1035 | |
| 12 | HOT GAS VALVE BODY | 6396 | 31014 |
| | COIL - HOT GAS VALVE 115V/60HZ | 5414 | 31987 |
| 13 | COIL - HOT GAS VALVE 230V/60HZ | - | 30028 |
| | 14 | FILTER DRIER | 2560 |

WATER COOLED CONDENSER



SPIKA MS 400-700 R404A



| DESCRIPTION | | MODEL |
|-------------|---------------------------------------|---------|
| | | MS 700 |
| 1 | BASE PLATE | 31805 |
| 2 | WATER CONDENSER SUPPORT | 31804 |
| 3 | WATER CONDENSER | 32819 |
| 4 | INLET WATER CONDENSER VALVE 115V/60HZ | 7686 |
| 5 | DRAIN WATER CONDENSER CONNECTOR | 1689 |
| 6 | LEFT SUPPORT | 32356 |
| 7 | COMPRESSOR 115V/60HZ | 30662 |
| | COMPRESSOR 115V/60HZ ELECTRIC KIT | 30662EK |
| 8 | FILTER DRIER | 2560 |
| 9 | CHARGING VALVE | 335 |
| 10 | FAN CYCLE SWITCH | 7476E |
| 11 | HIGH PRESSURE SWITCH | 334 |
| 12 | HOT GAS VALVE COIN | 31987 |
| 13 | HOT GAS VALVE BODY | 31014 |
| 14 | HEAT EXCHANGER | 8575 |
| 15 | EXPANSION VALVE | 1035 |