

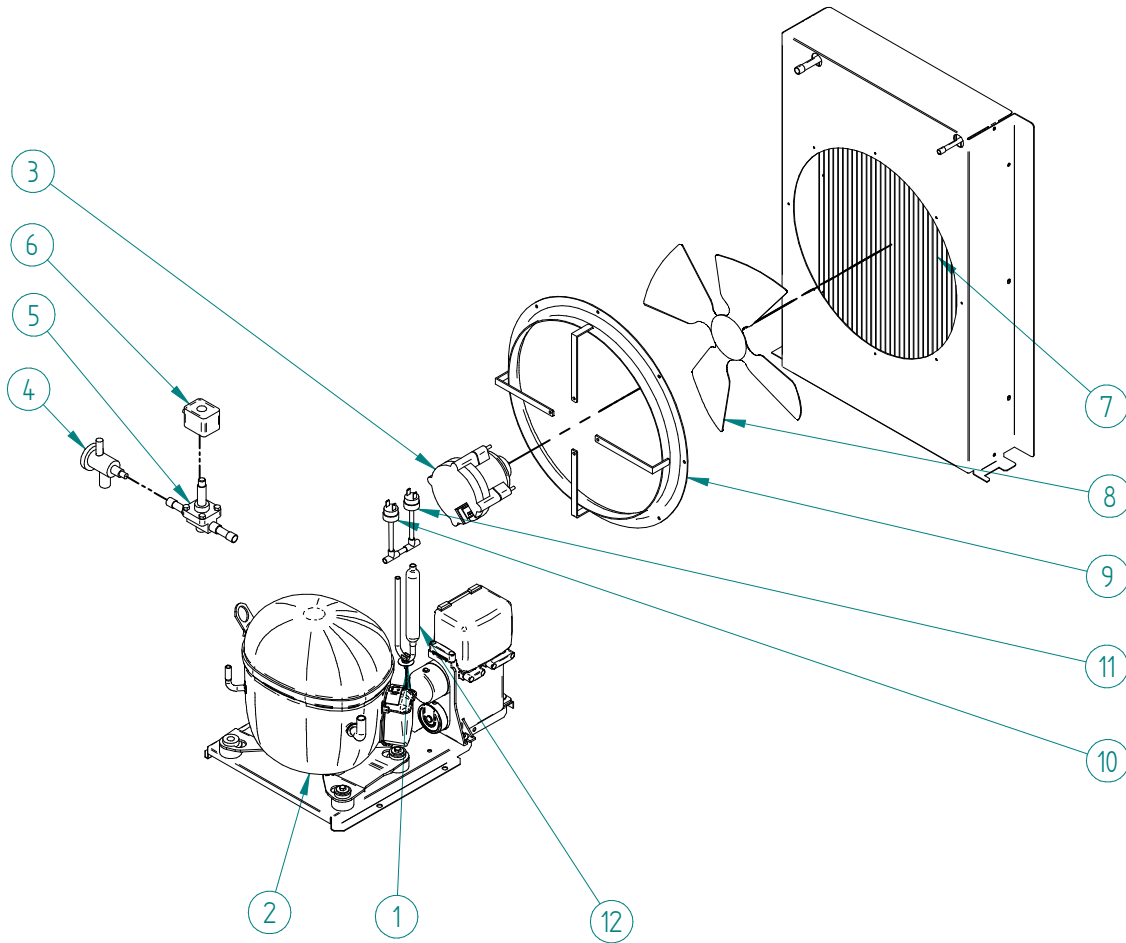


SPIKA MS 1500 TWIN

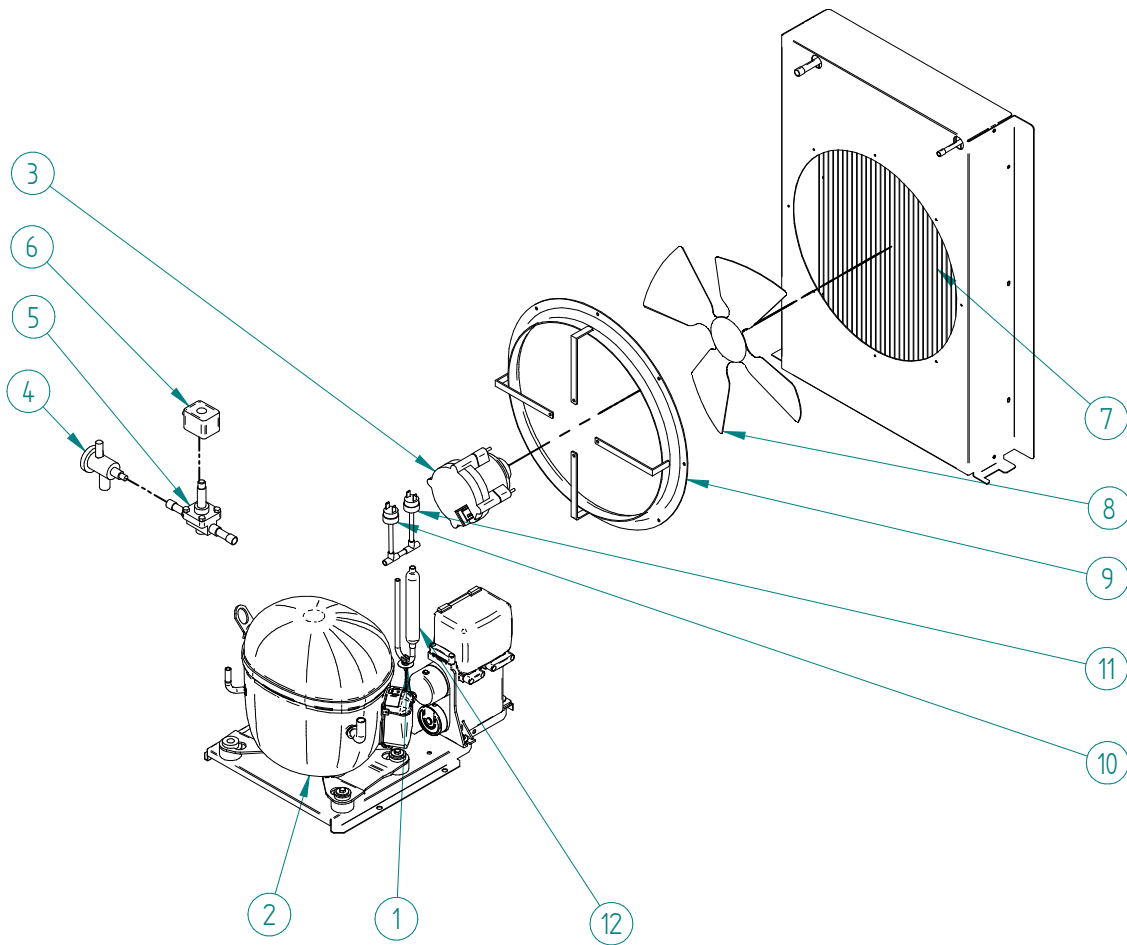
ITV
ICE makers



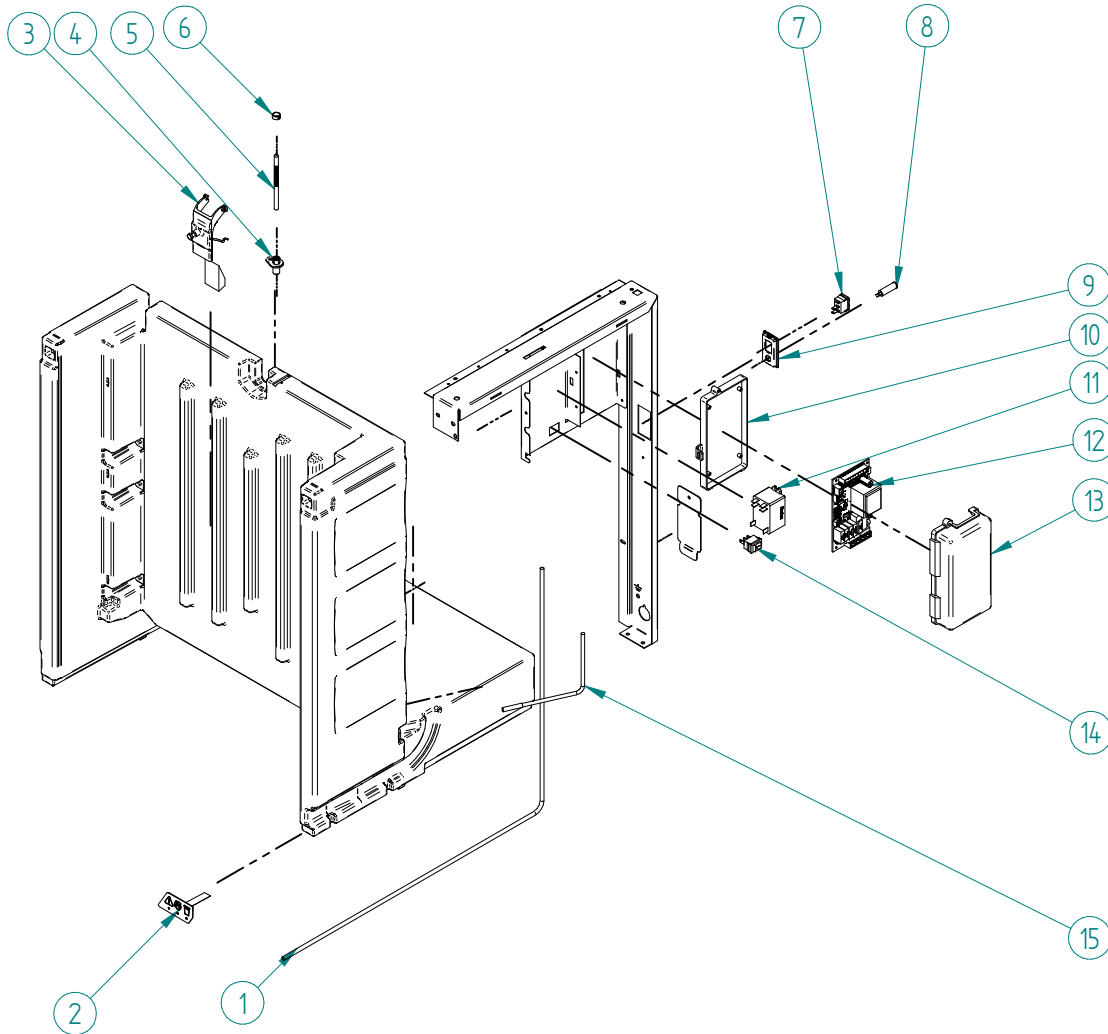
DESPIECE / REPUESTOS
EXPLODED VIEW / SPARE PARTS
EXPLOSIONSZEICHNUNG / ERSATZTEILE
VUE ÉCLATÉE / PIÈCES DÉTACHÉES
ESPLOSO / RICAMBI



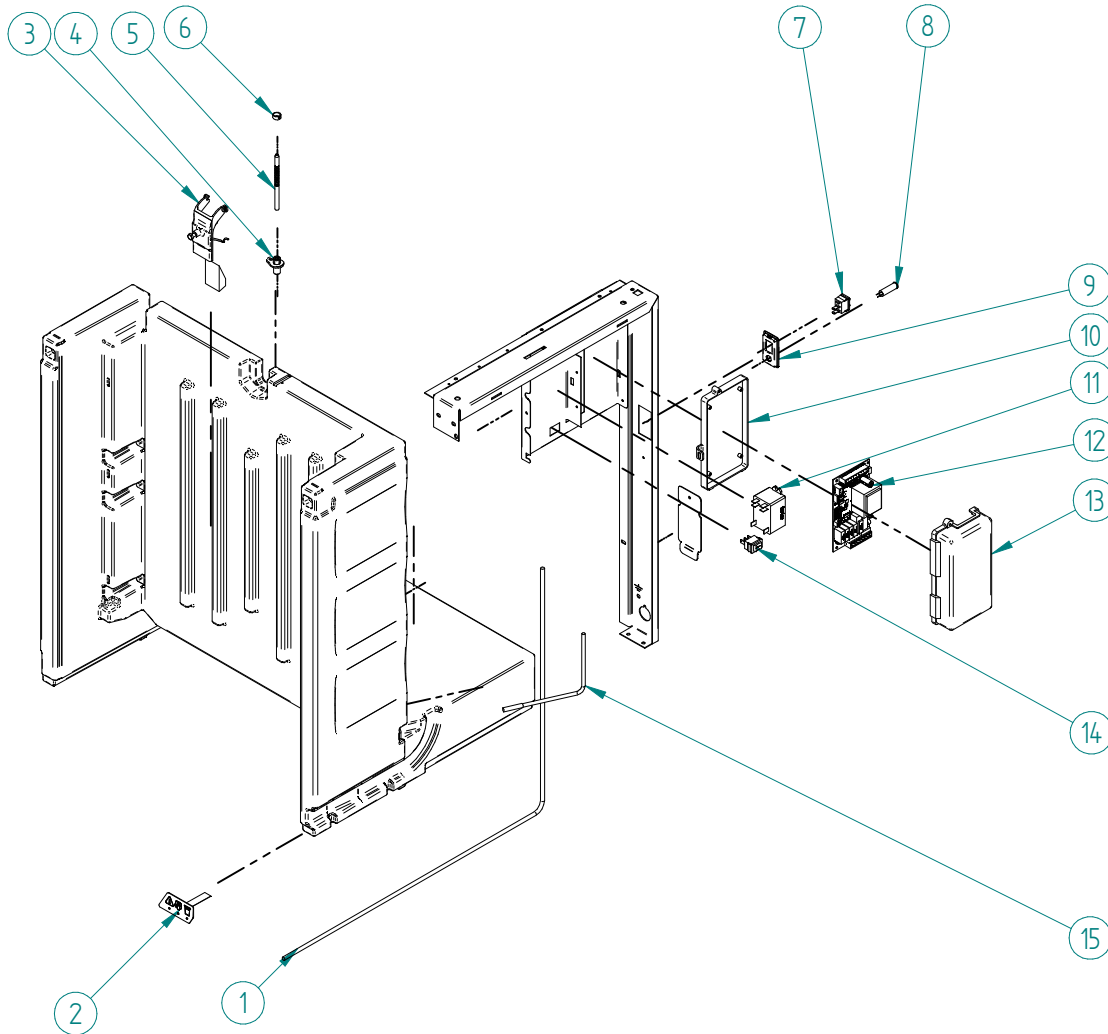
ITEM	DESCRIPTION	MS1500 TWIN
1	PLASTIC CLIP 1/4"	3533
2	COMPRESSOR 220V/60HZ	34965
3	FAN MOTOR 220V/50-60HZ	32895
	FAN MOTOR WIRE 220V/50-60HZ	35130
4	EXPANSION VALVE	31524
5	HOT GAS VALVE - BODY	31014
6	HOT GAS VALVE - COIL 220V/50-60HZ	30028
7	AIR CONDENSER	35246
8	FAN BLADE	6398
9	FAN SUPPORT	35628
10	HIGH PRESSURE SWITCH	31660E
11	FAN CONTROL PRESSURE SWITCH	31160E
12	DRIER FILTER	7896



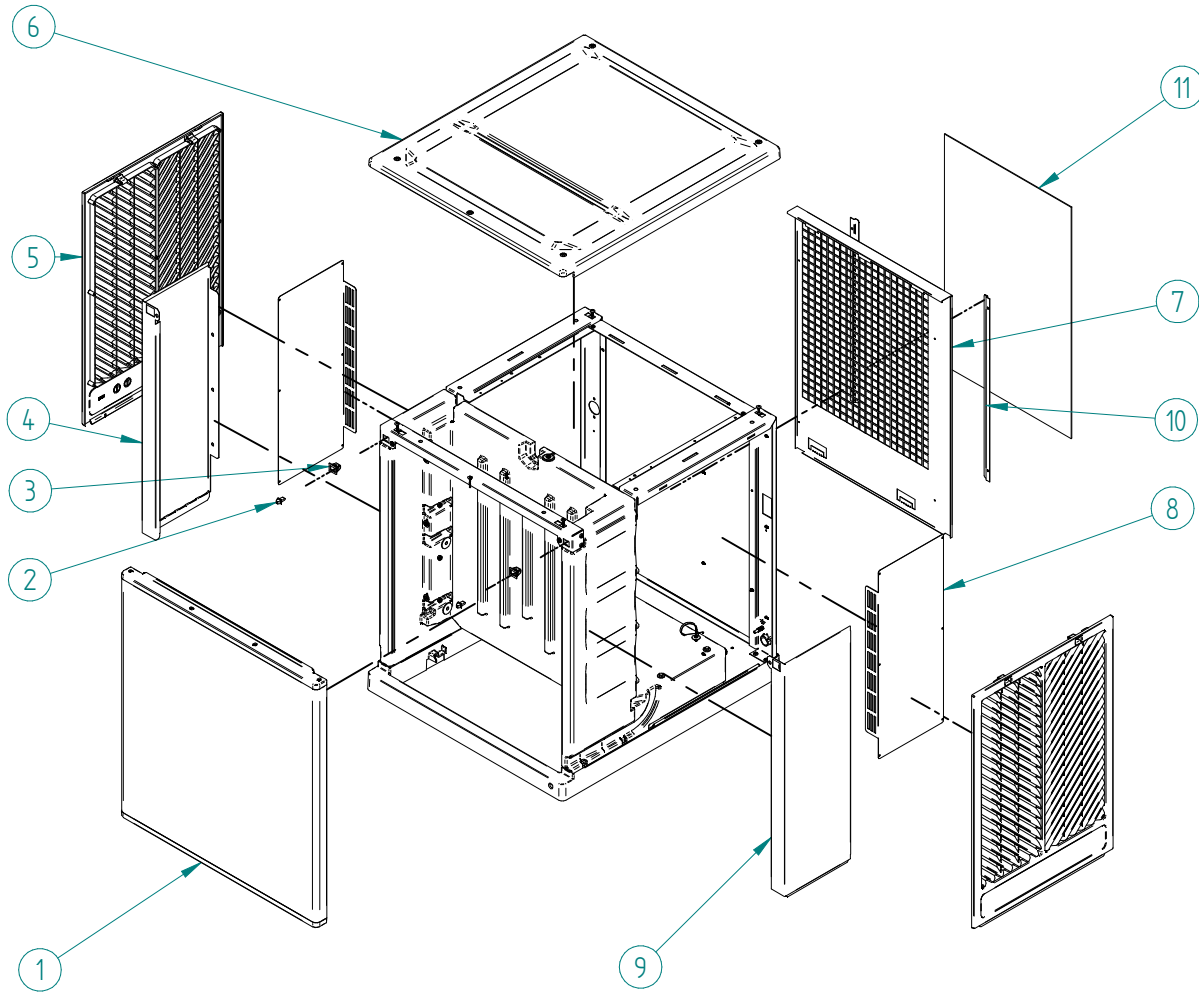
ITEM	DESCRIPTION	MS1500 TWIN
1	PLASTIC CLIP 1/4"	3533
2	COMPRESSOR 220V/60HZ	34965
3	FAN MOTOR 220V/50-60HZ	32895
	FAN MOTOR WIRE 220V/50-60HZ	35130
4	EXPANSION VALVE	31524
5	HOT GAS VALVE - BODY	31014
6	HOT GAS VALVE - COIL 220V/50-60HZ	30028
7	AIR CONDENSER	35246
8	FAN BLADE	6398
9	FAN SUPPORT	35628
10	HIGH PRESSURE SWITCH	31660E
11	FAN CONTROL PRESSURE SWITCH	31160E
12	DRIER FILTER	7896



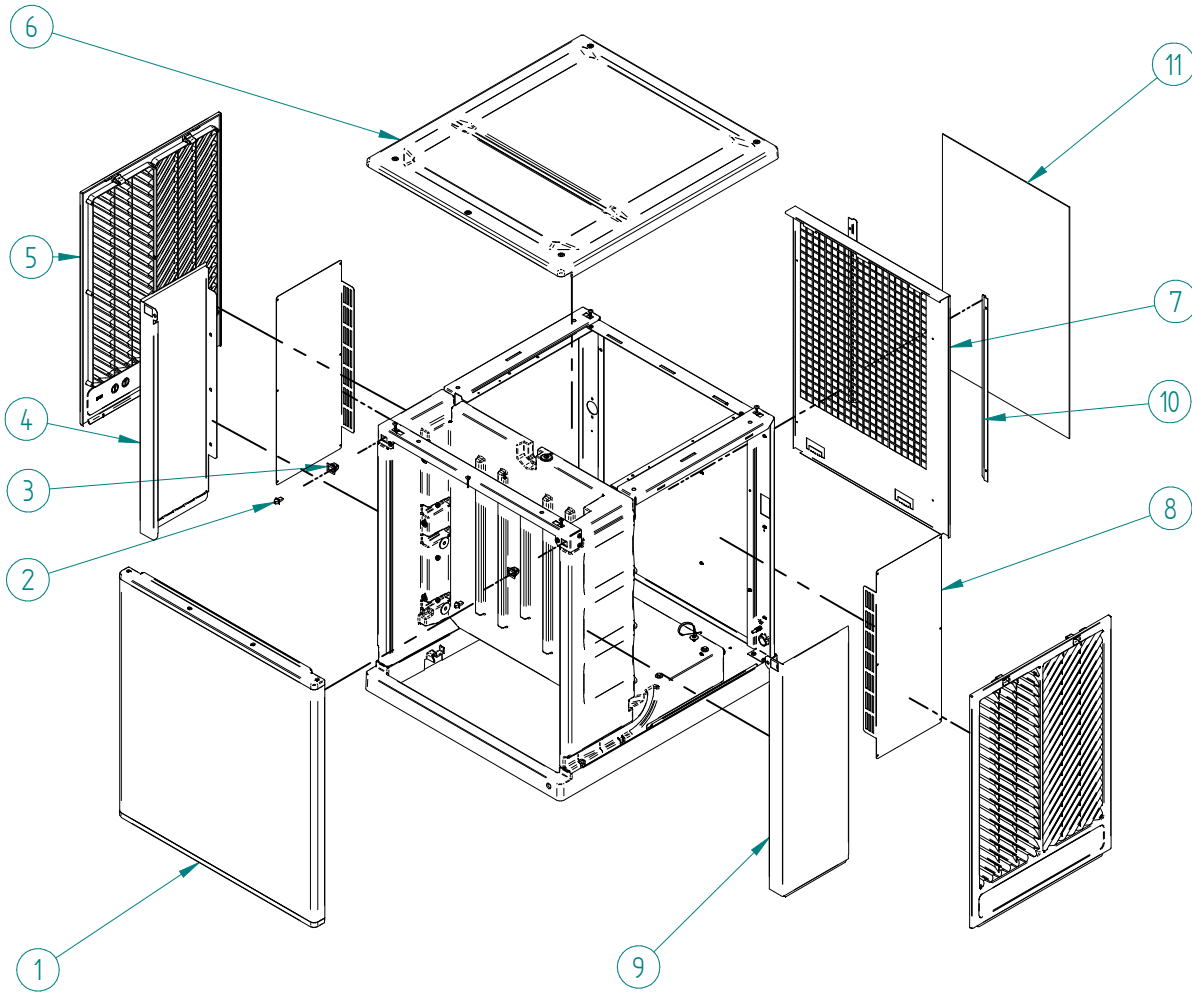
ITEM	DESCRIPTION	MS1500 TWIN
1	DISPLAY WIRE 220V/50-60HZ	34577
2	DISPLAY 220V/50-60HZ	34558
3	THICKNESS ICE BLOCK SENSOR	30894B
4	SUPPORT WATER LEVEL SENSOR	8670
5	ISOLATED WATER LEVEL SENSOR	30982
6	COMPRESSION RING	504
7	MAIN SWITCH	32416
8	BLUE LED	32415
9	MAIN SWITCH SUPPORT	32441
10	ELECTRIC BOX	2181
11	RELAY FINDER 220V/50-60HZ	32502
12	ELECTRONIC BOARD 220V/50-60HZ	34642A
13	ELECTRIC BOX COVER	30861
14	SWITCH (ICE-STANDBY-WASH)	6161
15	CURTAIN SENSOR	6521A



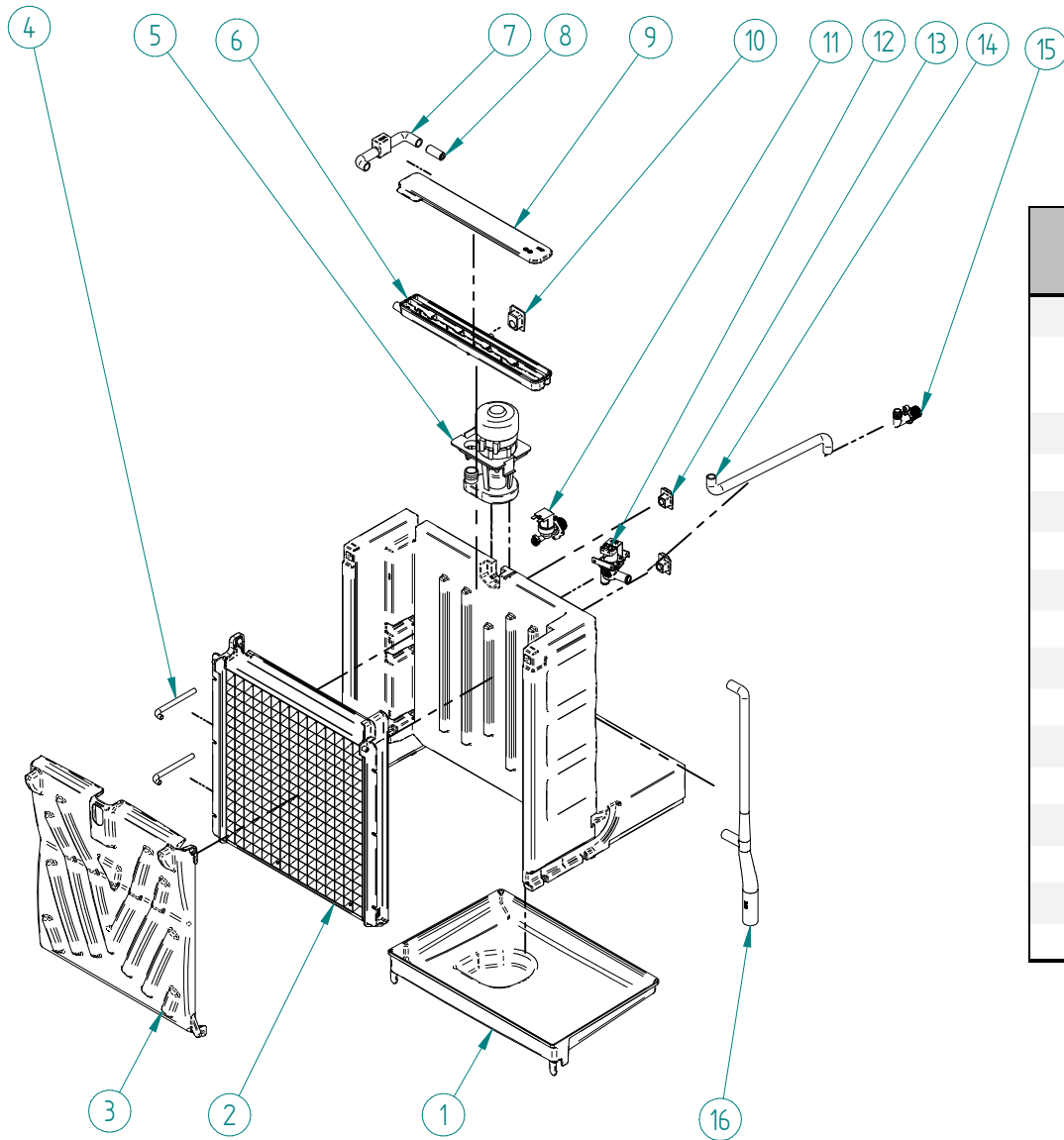
ITEM	DESCRIPTION	MS1500 TWIN
1	DISPLAY WIRE 220V/50-60HZ	34577
2	DISPLAY 220V/50-60HZ	34558
3	THICKNESS ICE BLOCK SENSOR	30894B
4	SUPPORT WATER LEVEL SENSOR	8670
5	ISOLATED WATER LEVEL SENSOR	30982
6	COMPRESSION RING	504
7	MAIN SWITCH	32416
8	BLUE LED	32415
9	MAIN SWITCH SUPPORT	32441
10	ELECTRIC BOX	2181
11	RELAY FINDER 220V/50-60HZ	32502
12	ELECTRONIC BOARD 220V/50-60HZ	34642A
13	ELECTRIC BOX COVER	30861
14	SWITCH (ICE-STANDBY-WASH)	6161
15	CURTAIN SENSOR	6521A



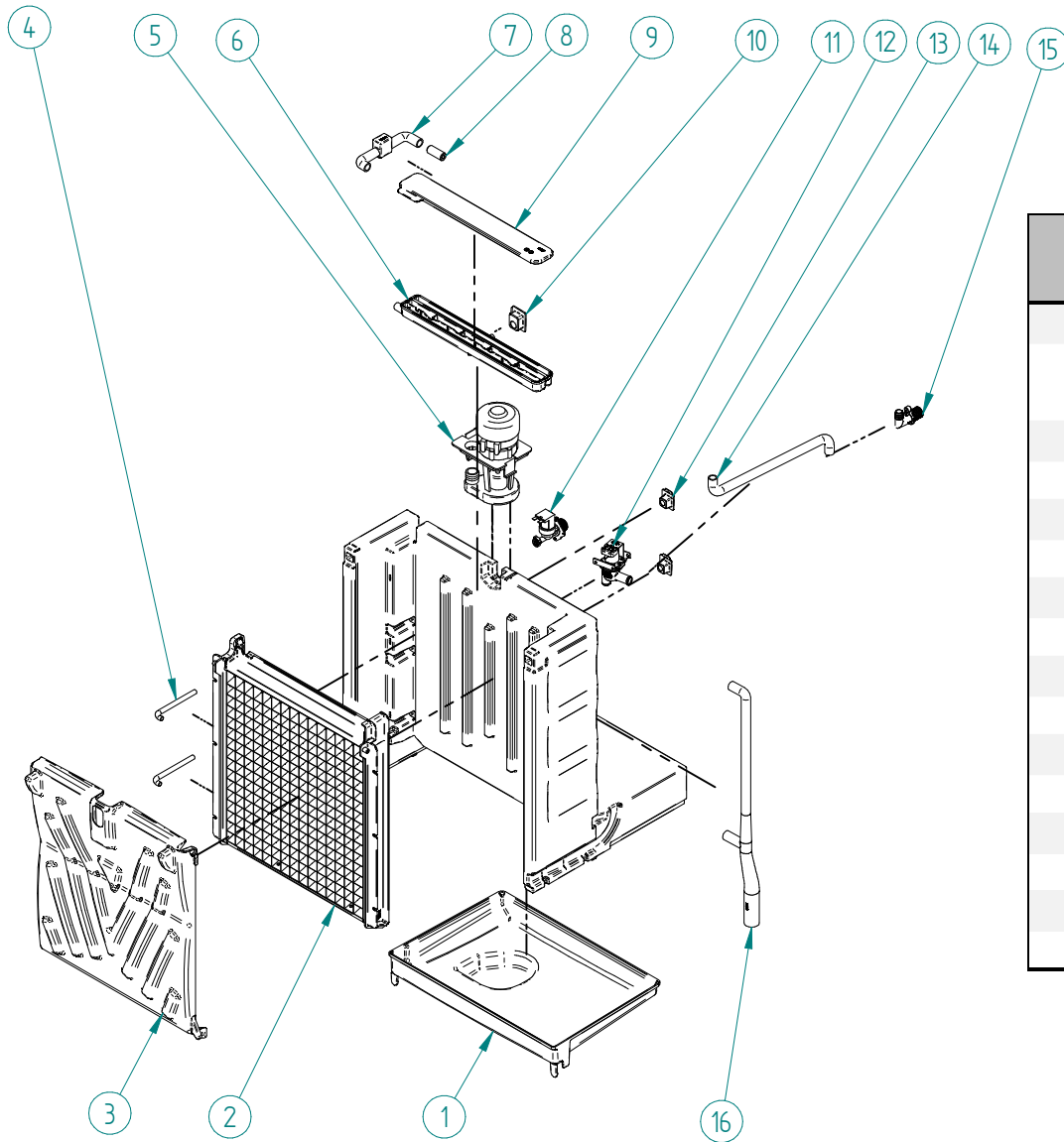
ITEM	DESCRIPTION	MS1500 TWIN
1	FRONT PANEL	30749
2	MALE PANEL CLIP	6181
3	FEMALE PANEL CLIP	6180
4	LEFT PANEL	30748
5	SIDE LOUVER	30424
6	TOP PANEL	30423
7	REAR PANEL	30746U
8	WIRE PROTECTION GRILL	30908
9	RIGHT PANEL	30747
10	AIR FILTER GUIDE	35328
11	AIR FILTER	35448



ITEM	DESCRIPTION	MS1500 TWIN
1	FRONT PANEL	30749
2	MALE PANEL CLIP	6181
3	FEMALE PANEL CLIP	6180
4	LEFT PANEL	30748
5	SIDE LOUVER	30424
6	TOP PANEL	30423
7	REAR PANEL	30746U
8	WIRE PROTECTION GRILL	30908
9	RIGHT PANEL	30747
10	AIR FILTER GUIDE	35328
11	AIR FILTER	35448



ITEM	DESCRIPTION	MS1500 TWIN
1	WATER BIN	30413
2	EVAPORATOR FULL DICE ASSY	30907
3	EVAPORATOR HALF DICE ASSY	30752
3	CURTAIN	30420K
4	PIPE	30690
5	WATER PUMP	220V/50-60HZ 6509
6	WATER DISTRIBUTOR	30422
7	UPPER WATER PUMP DISCHARGE TUBE	30684
8	WATER FLOW RESTRICTOR 9MM	31246
9	DISTRIBUTOR COVER	30427
10	WATER DISTRIBUTOR PROTECTOR	30682
11	INLET WATER VALVE	220V/50-60HZ 6980
12	WATER DRAIN VALVE	220V/50-60HZ 33550
13	PIPE PROTECTION	30683
14	DRAIN TUBE	220V/50-60HZ 30468A
15	DRAIN FITTING	220V/50-60HZ 30850
16	LOWER WATER PUMP DISCHARGE TUBE	30469



ITEM	DESCRIPTION	MS1500 TWIN
1	WATER BIN	30413
2	EVAPORATOR FULL DICE ASSY	30907
	EVAPORATOR HALF DICE ASSY	30752
3	CURTAIN	30420K
4	PIPE	30690
5	WATER PUMP	220V/50-60HZ 6509
6	WATER DISTRIBUTOR	30422
7	UPPER WATER PUMP DISCHARGE TUBE	30684
8	WATER FLOW RESTRICTOR 9MM	31246
9	DISTRIBUTOR COVER	30427
10	WATER DISTRIBUTOR PROTECTOR	30682
11	INLET WATER VALVE	220V/50-60HZ 6980
12	WATER DRAIN VALVE	220V/50-60HZ 33550
13	PIPE PROTECTION	30683
14	DRAIN TUBE	220V/50-60HZ 30468A
15	DRAIN FITTING	220V/50-60HZ 30850
16	LOWER WATER PUMP DISCHARGE TUBE	30469