

Spika Cube Machines

Modular Series R290



 **NATURAL**
REFRIGERANT

ITV | 
icemakers



About ITV Ice Makers

ITV Ice Makers, Inc. is a dynamic and innovative U.S. Company, with its factory in Spain. After more than 40 years in the business, with over half a million customers in nearly 100 countries, we strive to surpass our world-renowned reputation of keeping these customers happy. We accomplish this through state-of-the-art production capabilities, efficient management systems, and the use of clean and environmentally friendly technologies.

ITV's manufacturing facility is vertically integrated, automated with robotic machinery, reducing labor intensity, and produces a finished product that can be described with four basic words:

QUALITY - SIMPLICITY - RELIABILITY - SERVICEABILITY

»» *An Eco-Friendly Company* ««

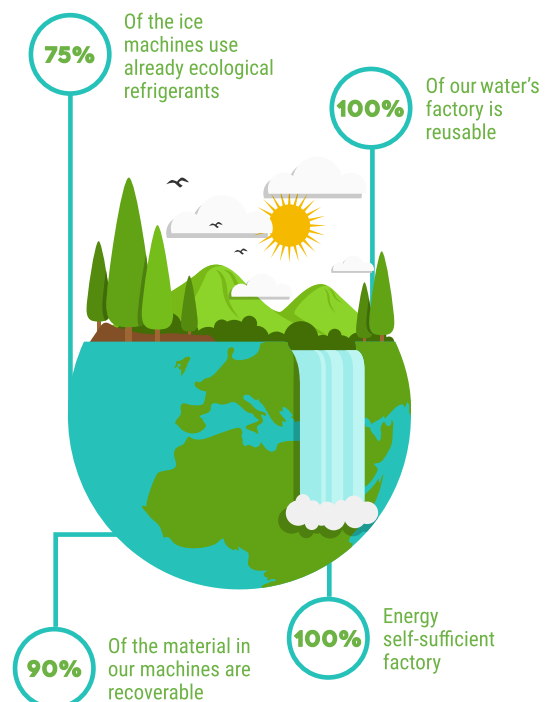
The New Green Age of ITV Ice Makers presents a step forward in the sustainable development of ice machine manufacturing, counteracting global warming in favor of the environment and improving energy efficiency.

HOW ARE WE ECO-FRIENDLY?

- We use eco-friendly R290 and refrigerant gases.
- We produce machines with a lower electrical consumption and less cooling gas load.
- Our machines are 100% recyclable.
- We have a solar plant that produces clean energy recycled water in production and have completely eliminated "papers" in the plant, thanks to the digitalization of processes.

WHAT ARE THE ADVANTAGES OF R290 REFRIGERANTS?

- **Eco-gas:** R290 natural gas with a very low global warming potential that also reduces energy consumption.
- **Lifetime-machine:** the R290 refrigerant is a permanent ecological alternative in the long term.
- **Power-save:** low energy consumption, higher efficiency.
- **Silent-system:** lower working pressure and lower machine noise.
- **Smart-performance:** maintains better performance in hot or poorly condensed conditions.
- **Eco-air:** ventilation system 38% more efficient than other configurations.
- **Electronic self-control system:** total control of the machine by electronic board.



Spika - Modular



ITV builds its ice makers to the highest standards of quality. Each of our units starts with a rigged frame which the machines components are mounted to. Our machines are accessible from all sides. Each panel is removable for service and cleaning.



All units are constructed of 304 stainless steel for maximum durability and longevity.



ITV's evaporators are made from copper dipped in nickel. These are coated 5 times to ensure long life. Even In the toughest conditions high efficiency evaporator.



This allows the unit to fit and operate in tight applications. ITV Also has a cleanable air filter that is removable from the front for quick cleaning.



I check diagnostics. The computer board will give an error. Code to help diagnose any issues with the machine.



Quick connect electrical components for easy changing of parts.



Spika Cubers

SPIKA Series offers the “Classic American” style of ice available in full and half dice shaped cubes, that will meet the most stringent demands of the food service industry.

A new revolutionary system for water distribution, patented by ITV, allows water to “cascade” over the entire evaporator, allowing SPIKA cubes to take form perfectly.

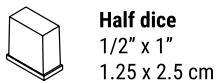
The Vertical Plate Evaporator, specially designed by ITV’s engineers, is much more energy efficient than others, resulting in lower operating cost and greater savings, while maintaining the utmost environmental friendliness.

Beverages are chilled in a very short time while not affecting the taste. The SPIKA Series meets the most demanding requirements with fast ice production.

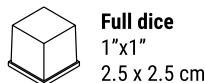
FULL DICE 12gr



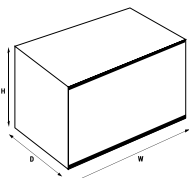
HALF DICE 6gr



Half dice
1/2" x 1"
1.25 x 2.5 cm



Full dice
1"x1"
2.5 x 2.5 cm



SPIKA MS 400-22			SPIKA MS 500			SPIKA MS 700-22			SPIKA MS 1000		
Daily Production (Lbs./Kg)			Daily Production (Lbs./Kg)			Daily Production (Lbs./Kg)			Daily Production (Lbs./Kg)		
432 (196)			472 (214)			668 (303)			957 (434)		
W	D	H	W	D	H	W	D	H	W	D	H
22"	24.41"	26"	30"	24.41"	19.69"	22"	24.41"	26"	30"	24.41"	30"
55.9 cm	62 cm	65.9 cm	76 cm	62 cm	50 cm	55.9 cm	62 cm	65.9 cm	76 cm	62 cm	76 cm

Fuse Size

Fuse Size 15

Fuse Size 20

Fuse Size 15



ITV Ice Makers Inc.
9550 Satellite Blvd, Suite 100
Orlando, FL 32837

Phone: 1 407 826 1860
Fax: 1 407 826 1861
Toll Free: 1 888 488 1423
admin@itvice.com
service@itvice.com
sales@itvice.com

www.itvice.com

