



NGDP

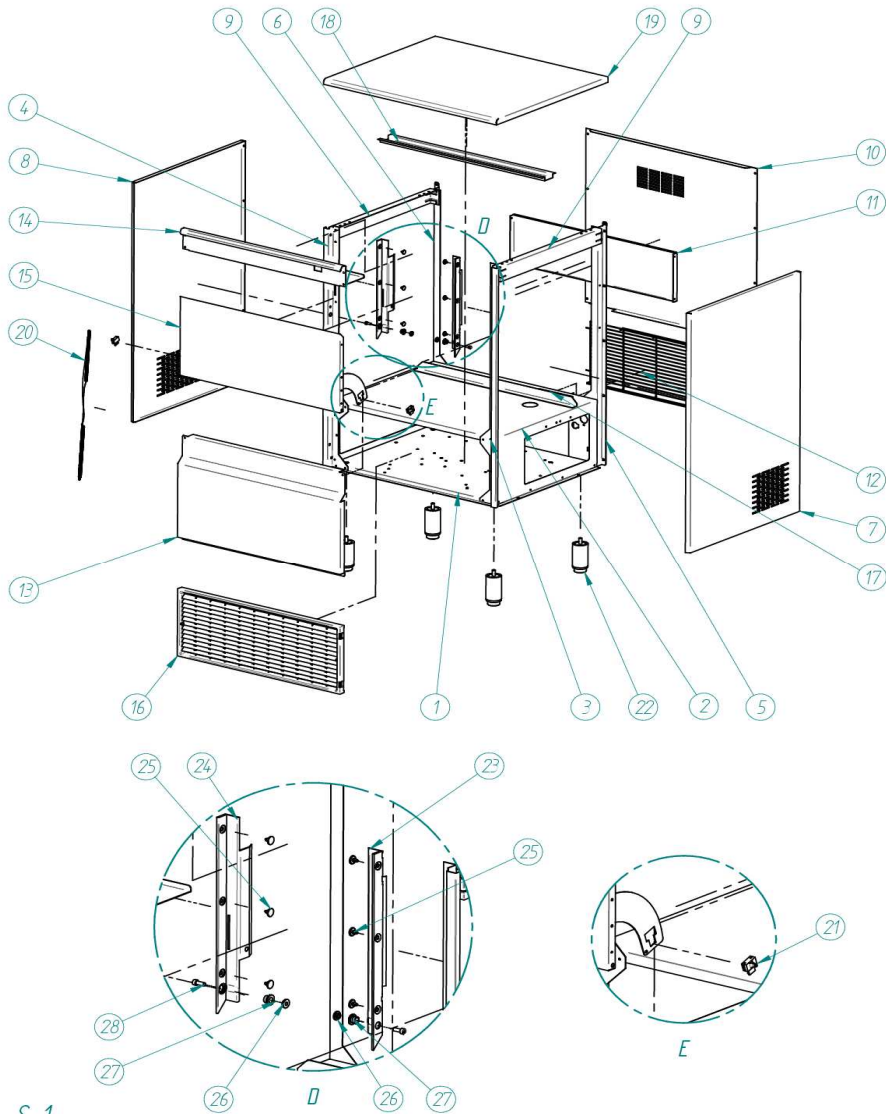
ITV
ICE makers



DESPIECE / REPUESTOS
EXPLODED VIEW / SPARE PARTS
EXPLOSIONSZEICHNUNG / ERSATZTEILE
VUE ÉCLATÉE / PIÈCES DÉTACHÉES
ESPLOSO / RICAMBI

ITV | ICE makers **SERVICE** 

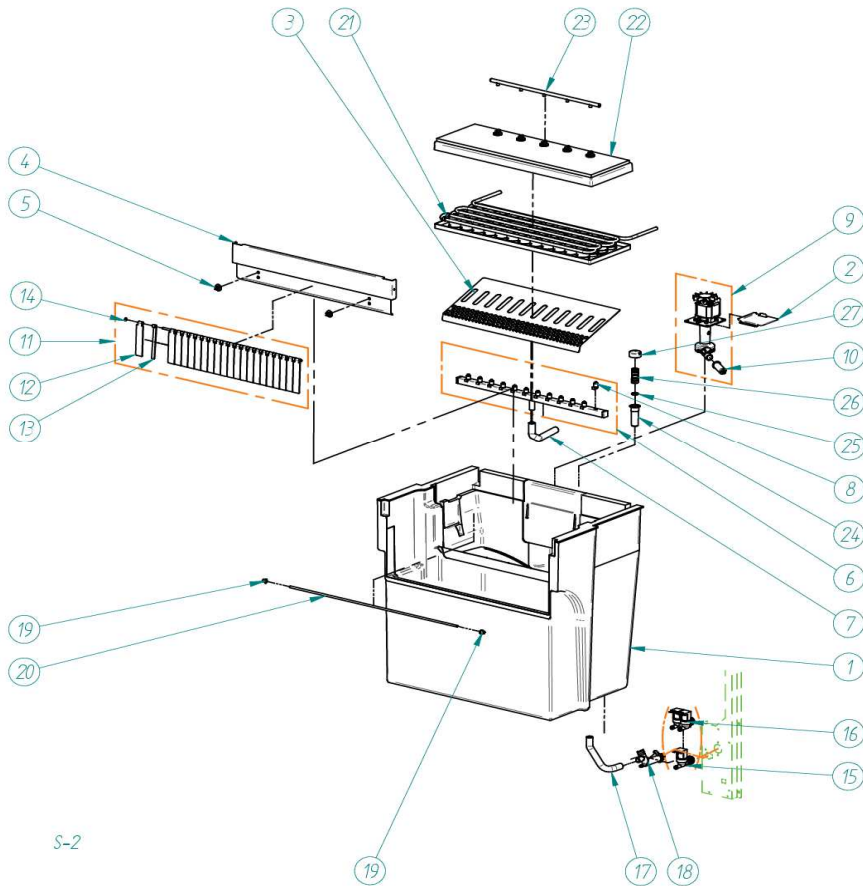
CABINET



| | DESCRIPTION | MODEL | | | | | |
|----|--|-------|------|-------|-------|-------|-------|
| | | NG75 | NG95 | NG135 | NG175 | NG265 | NG355 |
| 1 | BASEMENT | 2836 | 808 | 4160 | 1734 | 3258 | 4313 |
| 2 | SUPPORT | 3078A | 506 | 4159 | 1735 | 3421 | 4314 |
| 3 | FRONT RIGHT COLUMN | 3292 | 159 | | 1736 | | 3434 |
| 4 | FRONT LEFT COLUMN | 3923 | 160 | | 1737 | | 3435 |
| 5 | REAR RIGHT COLUMN | 3407 | 207 | | 1775 | | 3746 |
| 6 | REAR LEFT COLUMN | 3406 | 161 | | 1770 | | 3436 |
| 7 | RIGHT PANEL | 4957 | 4928 | | 4948 | | 4943 |
| 8 | LEFT PANEL | 4958 | 4929 | | 4949 | | 4944 |
| 9 | BRACE | 3520 | | 557 | | | 3778 |
| 10 | REAR COVER | 4223 | 635 | 4172 | 1807 | 3785 | 4320 |
| 11 | REAR REINFORCEMENT (installed until 1283180) | 3528 | 2112 | 4171 | | 1800 | 4325 |
| 12 | REAR GRILL | 4185 | 1728 | 4088 | | 2192 | 4849 |
| 13 | LOWER FRONT PANEL | 3079 | 418 | 4186 | 1790 | 3770 | 4315 |
| 14 | UPPER FRONT PANEL | 4946 | 421 | 4169 | | 1791 | 4316 |
| 15 | DOOR | 5072 | 5030 | 5791 | | 5237 | 5857 |
| 16 | FRONT GRILL | 4185 | 4063 | 4186 | | 4188 | 4187 |
| 17 | BRIDGE ANGLE | --- | --- | --- | 2331 | 4984 | 4985 |
| 18 | COVER REINFORCEMENT | --- | --- | --- | 4146 | 4146 | 4326 |
| 19 | TOP COVER | 3387 | 920 | 4170 | 1792 | 3773 | 4317 |
| 20 | DOOR SPRING | | | | | | 702 |
| 21 | DOOR BUMPER | | | | | | 156 |
| 22 | LEG | | | | | | 1478 |
| 23 | RIGHT DOOR GUARD | | | | | | 82 |
| 24 | LEFT DOOR GUARD | | | | | | 83 |
| 25 | CLIP | | | | | | 113 |
| 26 | DOOR AXE BUSH | | | | | | 155 |
| 27 | DOOR AXE BEARING | | | | | | 1001 |
| 28 | DOOR SCREW | | | | | | 392 |

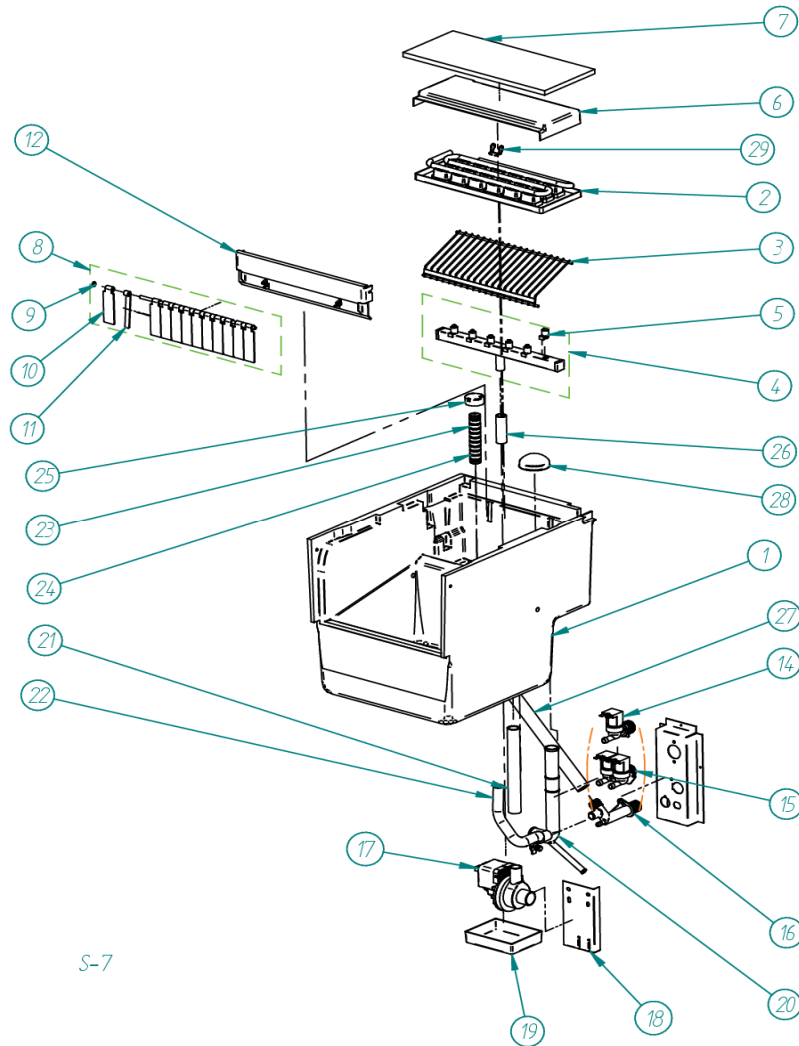
S-1

BIN & HIDRAULIC PARTS



S-2

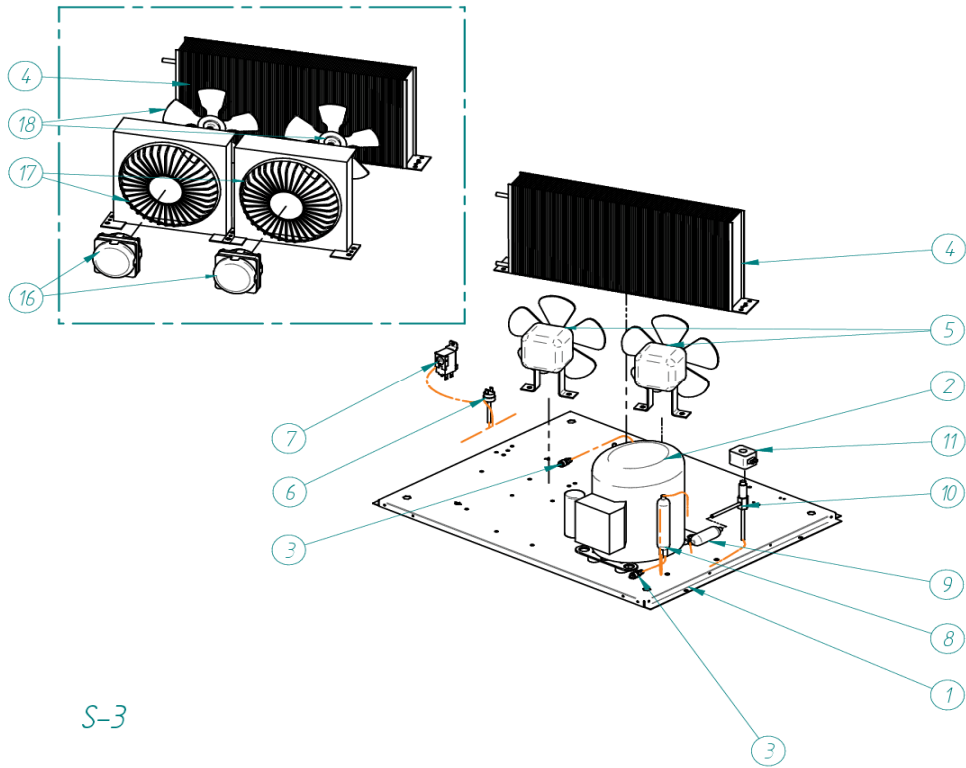
| | DESCRIPTION | MODEL | | | | | |
|----|----------------------------------|---------------|-------|----------------|-------|---------------|------|
| | | NG95 | NG135 | NG175 | NG265 | NG355 | |
| 1 | STOCK BIN | 7452 | 7388 | 7128 | 7322 | 7487 | |
| 2 | WATER BIN COVER | | | 1938 | | | |
| 3 | ICE CUBES RAMP | 4673 | 1147 | 2186 | 3805 | 4323 | |
| 4 | CURTAIN HOLDER | 121A | 4055A | 2187 | | 4193 | |
| 5 | CURTAIN CLIP | | | 3533 | | | |
| 6 | COLLECTOR | 7464 | 7406 | 7335 | 7350 | 7485 | |
| 7 | FORCE PIPE | 2148 | | 2191 | | 2148+576+2191 | |
| 8 | SPRAY NOZZLE | | | 526 | | | |
| 9 | WATER PUMP | 208-230V/60Hz | | --- | | 5927 | |
| | | 115V/60HZ | | 5850 | 5932 | --- | |
| 10 | PUMP FILTER | | | 1712 | | | |
| 11 | COMPLETE CURTAIN | 5900 | 5837 | 5395 | | 5929 | |
| 12 | EXTERIOR CURTAIN | | | 606 | | | |
| 13 | INSIDE CURTAIN | | | 605 | | | |
| 14 | CURTAIN JOINT | | | 8856 | | | |
| 15 | WATER VALVE 1B | | 7686 | 2783 | | 4897 | |
| 16 | WATER VALVE 2B (water condensed) | | 4900 | 6983+4476+7527 | | 7692 | |
| 17 | DRAIN PIPE | | | 2222 | | | |
| 18 | DRAIN COLLECTOR | | | 363 | | | |
| 19 | THERMOSTAT JOINT | | | 666 | | | |
| 20 | THERMOSTAT TUBE | 5913 | 5437 | 5422 | | 5933 | |
| | EVAPORATOR | | | | | | |
| 21 | | ALFA 20gr | 7030 | 7395 | 7258 | 7263 | 7479 |
| | | GALA 30gr | 7423 | 7400 | 7156 | 7352 | 7480 |
| 22 | EVAPORATOR COVER | 4433 | 5418 | 5406 | 5491 | 5928 | |
| 23 | WATER DISTRIBUTOR | --- | --- | --- | | 911 | |
| 24 | OVERFLOW DRAIN | | | 4425 | | | |
| 25 | JOINT | | 4496 | | | --- | |
| 26 | OVERFLOW PIPE | | 4426 | | | 2709 | |
| 27 | OVERFLOW PIPE CAP | | 4427 | | | --- | |



S-7

| | DESCRIPTION | MODEL |
|----|----------------------------------|-------|
| | | NG 75 |
| 1 | STOCK BIN | 7502 |
| 2 | EVAPORATOR | |
| | ALFA 20gr | 7492 |
| | GALA 30gr | 7491 |
| 3 | ICE CUBES RAMP | 4945 |
| 5 | NOZZLE | 526 |
| 6 | EVAPORATOR COVER | 5948 |
| 7 | EVAPORATOR INSULATION | --- |
| 8 | COMPLETE CURTAIN | 5968 |
| 9 | JOINT | 8856 |
| 10 | EXTERIOR CURTAIN | 1213 |
| 11 | INSIDE CURTAIN | 1212 |
| 12 | EVAPORATOR SUPPORT | 4697 |
| 13 | CLIP | 3533 |
| 14 | WATER VALVE 1B | 4899 |
| 15 | WATER VALVE 2B (water condensed) | 4900 |
| 16 | DRAIN COLLECTOR | 363 |
| 17 | WATER PUMP | 31982 |
| | WATER PUMP before 18230772 | 31998 |
| 18 | PUMP SUPPORT | 4956 |
| 19 | PUMP TRAY | 4521 |
| 20 | SUCTION PIPE | 4961 |
| 21 | FORCE PIPE | 4533 |
| 22 | DRAIN PIPE | 2222 |
| 23 | OVERFLOW PIPE | 4426 |
| 24 | SEAL JOINT | 4496 |
| 25 | OVERFLOW PIPE CAP | 4427 |
| 26 | COLLECTOR PIPE | 993 |
| 27 | PRODUCTION DRAIN | 2752 |
| 28 | FILTER | 580 |

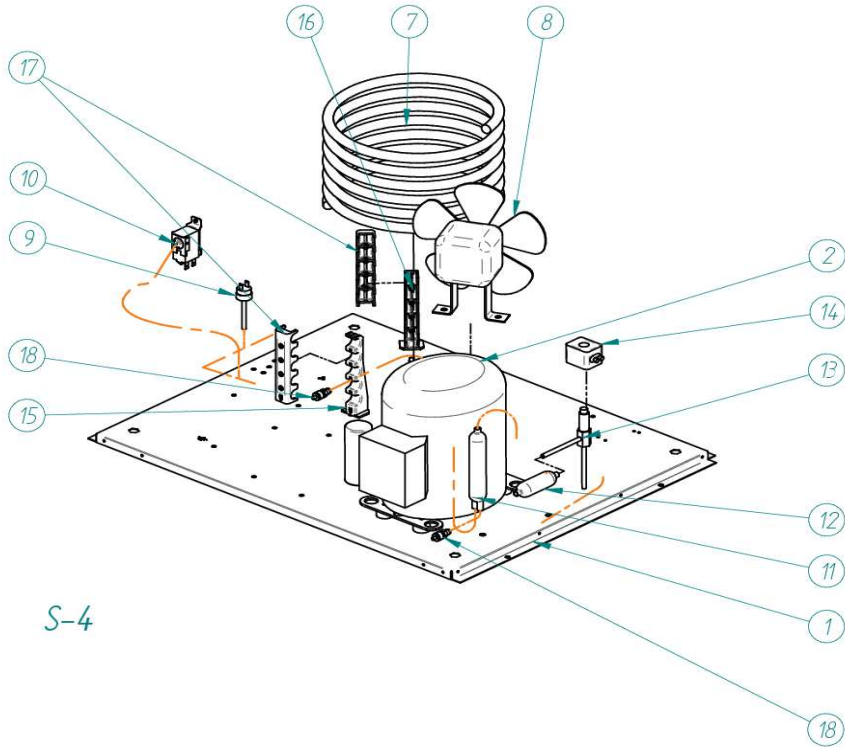
AIR CONDENSER UNIT



S-3

| | | DESCRIPTION | | | | | |
|------------|------------------------------|-------------|-------|-------|-------|-------|-------|
| | | NG75 | NG95 | NG135 | NG175 | NG265 | NG355 |
| 1 | BASE | 2836 | 808 | 4160 | 1734 | 3258 | 4313 |
| COMPRESSOR | | | | | | | |
| 2 | 208-230V/60Hz | --- | | | | | 32029 |
| | 115V/60Hz | 82801 | 82701 | 4827 | 82803 | 32808 | --- |
| 3 | CHARGING VALVE | 335 | | | | | |
| 4 | CONDENSER | 491 | 486 | 487 | 2867 | 1052 | 500 |
| 5 | FAN | 4889 | 4890 | | 4993 | | |
| 6 | HIGH PRESSURE SWITCH | 334 | | 2683 | | | |
| 7 | CONDENSATION PRESSURE SWITCH | 7476E | | | 2507 | | |
| 8 | DRIER | 449 | 1717 | | 2560 | | |
| 9 | HOT GAS VALVE FILTER | 448A | | | | | |
| 10 | HOT GAS VALVE | 1468 | 1473 | | 843 | | |
| 11 | COIL | 115V/60HZ | 5414 | | 5173 | | |
| 16 | FAN MOTOR | 4889 | 4890 | | 4131 | 4230 | |
| 17 | CONDENSING BAFFLE | --- | | | 2433 | 2435 | |
| 18 | FAN BLADE | 4887 | | | 4994 | | |

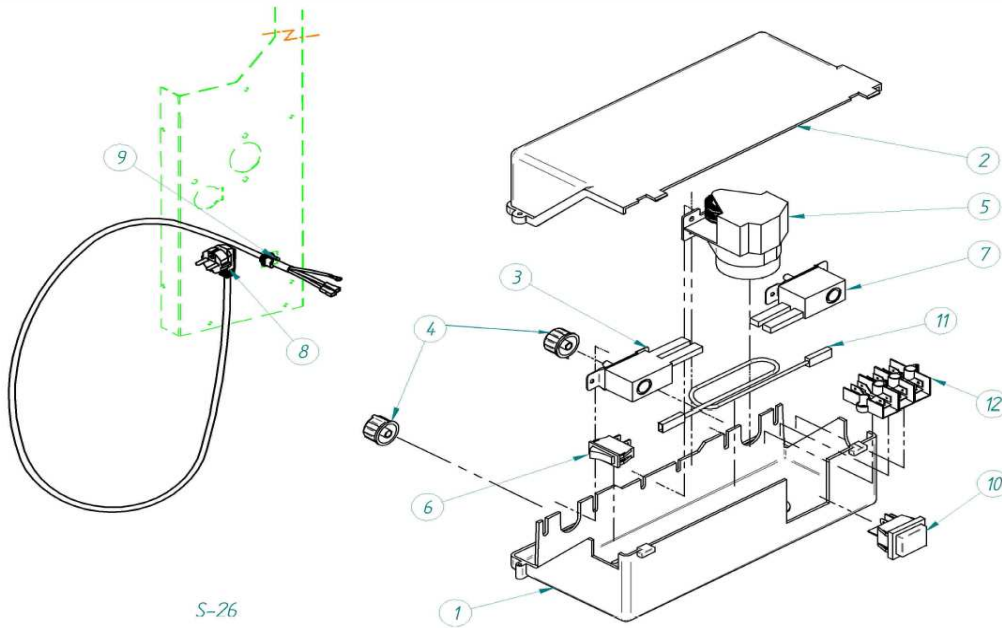
WATR CONDENSER UNIT



S-4

| | DESCRIPTION | | | | | |
|----|----------------------|------|-------|-------|----------|----------|
| | NG75 | NG95 | NG135 | NG175 | NG265 | NG355 |
| 1 | 2836 | 808 | 4160 | 1734 | 3258 | 4313 |
| 2 | COMPRESSOR | | | | | |
| | 208-230V/60H: | | --- | | 32029 | |
| | 115V/60H: | | 82801 | 82701 | 4827 | 82803 |
| 7 | 8483 | 5243 | 5244 | | 5246 | 3267 |
| 8 | FAN | | | | | |
| | --- | | | | 4892+587 | 4892+587 |
| 9 | 334 | | | | 2683 | |
| 10 | 7476E | | | | 2507 | |
| 11 | 1717 | | | | 2560 | |
| 12 | HOT GAS VALVE FILTER | | | | 448A | |
| 13 | HOT GAS VALVE | | | | 1473 | |
| 14 | 115V/60H: | | 5414 | | 843 | |
| 15 | CONDENSER SUPPORT | | | | 4036 | |
| 16 | CONDENSER SUPPORT | | | | 4037 | |
| 17 | CONDENSER SUPPORT | | | | 4038 | |
| 18 | CHARGING VALVE | | | | 335 | |

ELECTRIC BOX



S-26

| | DESCRIPTION | | | | | |
|----|---------------------|------|-------|-----------|-------|-------|
| | NG75 | NG95 | NG135 | NG175 | NG265 | NG355 |
| 1 | BASE | | | 4789 | | |
| 2 | COVER | | | 4790 | | |
| 3 | CYCLE THERMOSTAT | | | 153 | | |
| 4 | THERMOSTAT CONTROL | | | 272 | | |
| 5 | TIMER | | | 115V/60HZ | | |
| 6 | CLEANING SWITCH | | | 2300 | | |
| 7 | STOCK THERMOSTAT | | | 274 | | |
| 8 | SUCKO PLUG | | | | | |
| | 208-230V/60HZ | | --- | | 4851 | |
| | 115V/60HZ | | 2771 | | 6109 | |
| 9 | WIRING FLANGE | | | 664 | | |
| 10 | MAIN SWITCH | | | 31496 | | |
| 11 | RESISTANCE PVC 115V | | | 4867 | | |
| 12 | CONNECTOR | | | 5177 X 3 | | |