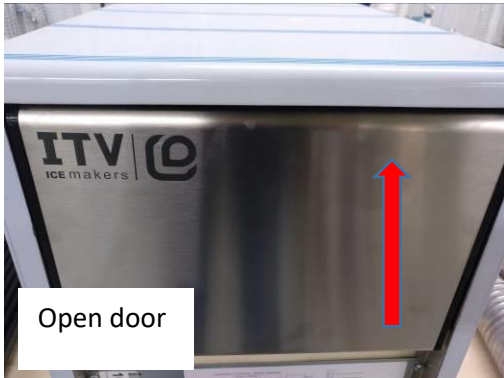


HOW TO CLEAN THE NDP55 NOZZLES AND WATER FILTER

The icemaker needs to be cleaned to avoid scale formation and bad water spray on the evaporator. To do so, please follow the next steps.

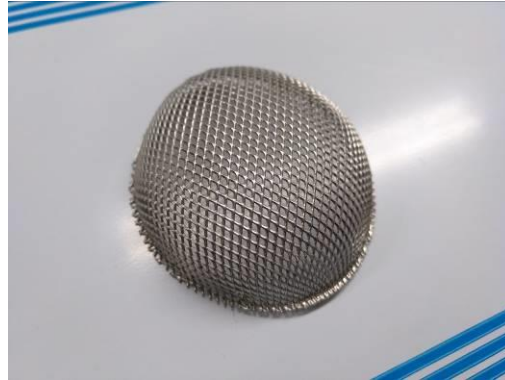
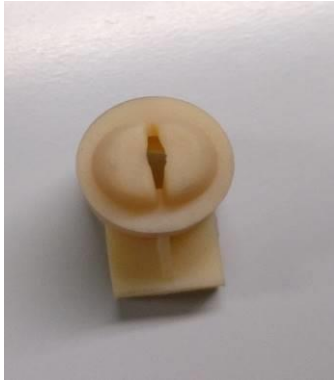
- **STEP 1:** Remove the curtain and the ice rack, you can do that from the front of the unit, by opening the door, and then grab 2 or 3 curtain flaps, and pull towards you. Then remove the ice rack by pulling upwards and then towards you.



- **STEP 2:** Remove the nozzle collector and the pump filter. To remove the collector just pull upwards to remove the plastic tube from its position. To remove the water filter just pull upwards (you might need to use a small flat head screwdriver to push upwards, it fits tight).

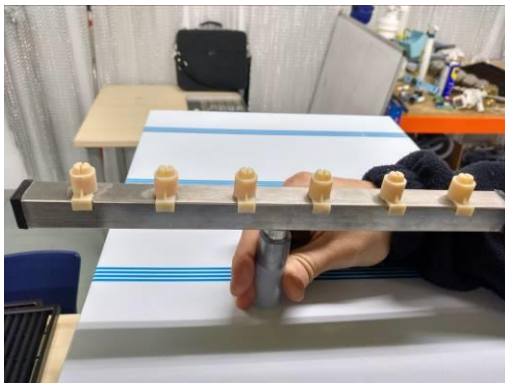


- **STEP 3:** Remove the nozzles one by one, by pulling them out of the metallic collector, and clean them. Also, clean the metallic filter.



Clean nozzles and filter

- **STEP 4:** Put the nozzles in place (keep in mind the position, same one, and always the L shape towards the front door, as the next picture.



- **STEP 5:** Assemble everything backwards, please remember that the collector must fit tight in place, the plastic pipe has to fit the hole. And please place the metallic filter correctly, tight so it does not move while working.

Next you have some pictures of the correct spray pattern. If some nozzle does not spray upwards and in line, use a flat head screw driver and use it to fit in inside the line of the nozzle to open it a little bit so it releases the scale inside.

